

Equilibrium

Enwork and OMNIA Partners. Working together, for you.

We focus on our customers by providing high quality, design-oriented products at price points and service levels unparalleled in the marketplace. Leverage the purchasing power of our OMNIA Partners National Contract and have peace of mind that you'll be receiving the best products at the best prices with the best service. With expertise in COVID-19 response products, training, conference, collaborative, and adjustable tables, anything is possible. **Experience the Enwork Difference today.**

Furniture, Installation and Related Services

Region 4 ESC - TX
Contract Number: **R191819**

September 1, 2020 to April 30, 2023

Option to renew for two (2) additional one-year periods through April 30, 2025
<https://public.omniapartners.com/suppliers/enwork/contract-documentation>

Ordering Details:

Dealers are authorized to accept orders and perform billing on Enwork's behalf for this contract. Due to tax implications, Enwork can only accept direct orders from OMNIA Partner's members who are tax exempt, requiring a member's tax exempt certificate be on file prior to purchase. Members may use the following address format when placing direct:

Enwork
c/o (name of Participating Dealer)
12900 Christopher Dr.
Lowell, MI 49331-9420

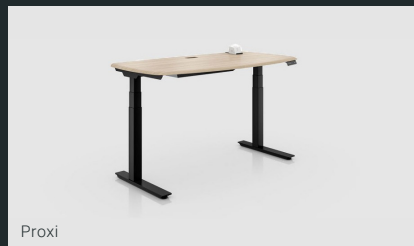
Quote inquiries or requests can be directed to your local Enwork Sales Rep, or designteam@enwork.com. Reference "products and pricing per OMNIA Partners R191819".

OMNIA Partners National Contract Discounts:

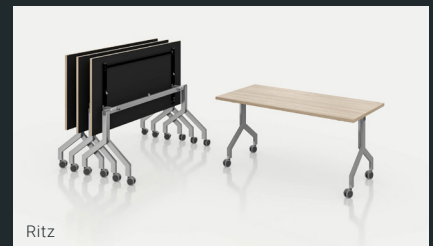
ORDER SIZE	OMNIA PARTNER PROGRAM
\$0 - \$30,000 List	60%
\$30,001 - \$60,000 List	63%
\$60,001 - \$120,000 List	65%
\$120,001 List +	67%
Projects over \$250,000, discounts are negotiable.	



Adventure



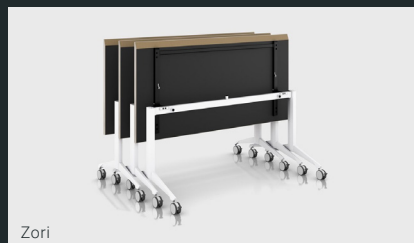
Proxi



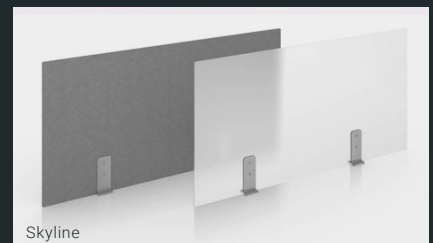
Ritz



Latitude



Zori



Skyline