

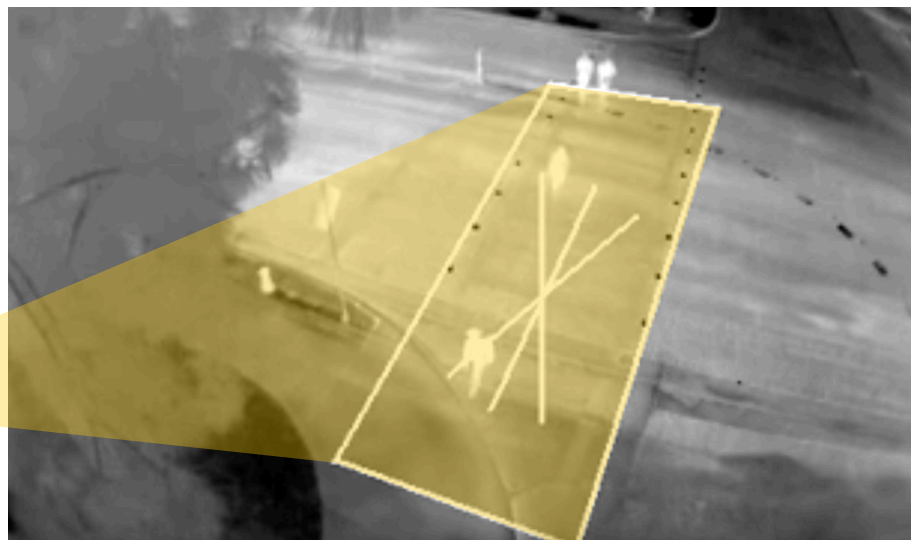
# THERMAL-ACTIVATED PEDESTRIAN CROSSWALK SYSTEM

Industry-leading thermal sensors use infrared heat profiles to identify vulnerable road users moving within targeted detection zones and activate any TAPCO pedestrian crosswalk system - Rectangular Rapid-Flashing Beacon, BinkerSign<sup>®</sup> and BlinkerBeacon<sup>™</sup> systems.

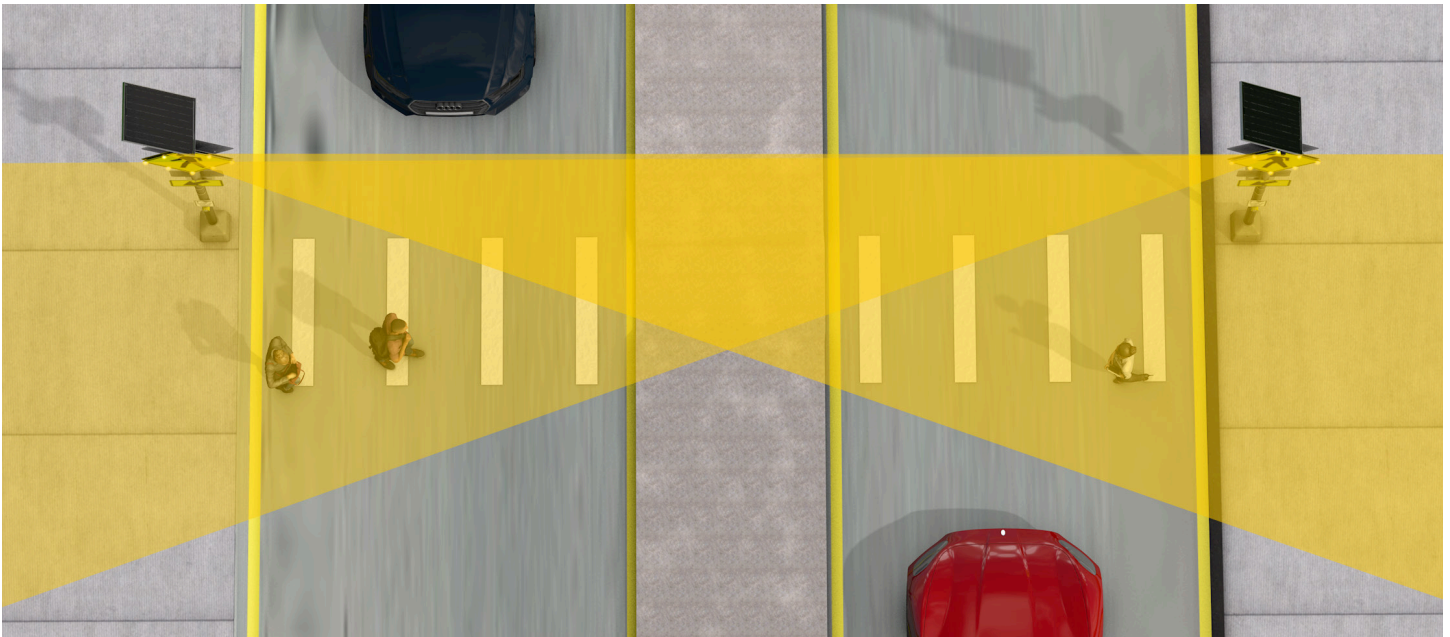
The sensors also detect directionality – meaning they activate only when people approach them – and/or presence

## KEY BENEFITS

- Completely touchless and hands-free activation
- Works in total darkness, through shadows and in sun glare
- Versatile functionality with many possible zones and configurations
- Works for both pedestrians and cyclists
- No digging or trenching needed
- Extremely accurate, waterproof and non-intrusive
- Programmable via a secure Wi-Fi connection



EXAMPLE OF PEDESTRIAN THERMAL DETECTION



**ILLUSTRATION OF THERMAL DETECTION ZONE**

## SPECIFICATIONS

<b>POWER INPUT</b>	12 to 42V DC		
<b>POWER CONSUMPTION</b>	3 watts		
<b>SENSOR OPTIONS</b>	<b>LENS TYPE</b>	<b>FIELD OF VIEW</b>	<b>DETECTION DISTANCE</b>
	95°	Horizontal: 95° Vertical: 69°	0 to 40 feet
	56°	Horizontal: 56° Vertical: 45°	33 to 82 feet
<b>DETECTION ZONES</b>	Up to 8		
<b>INSTALLATION HEIGHT</b>	11.5 to 26 feet; dependent on number of zones to monitor and location of sensor		
<b>THERMAL SENSOR DETECTOR TYPE</b>	Long-wave infrared (8 to 14 um)		
<b>CONFIGURATION</b>	Ethernet, Wi-Fi		
<b>HOUSING</b>	Aluminum with sunshield		
<b>BRACKET</b>	Aluminum; horizontally or vertically fixed with banding straps		
<b>ENCLOSURE</b>	IP-67 rated		
<b>MATERIALS</b>	Weatherproof; UV-resistant		
<b>SHOCK &amp; VIBRATION</b>	NEMA TS2		
<b>FCC</b>	FCC part 15 class A		
<b>OPERATING TEMPERATURE RANGE</b>	-40°F to 131°F (-40°C to 55°C)		
<b>DIMENSIONS (INCLUDING BRACKET)</b>	Horizontally mounted: 8.3"W x 10.8"H x 2.0"D		
	Vertically mounted: 6.4"W x 12.7"H x 2.2"D		



(800) 236-0112

TAPCOnet.com