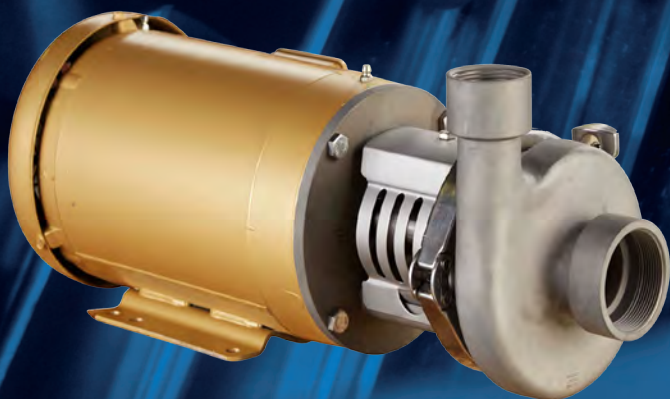




Haight Pump's Complete Line of
HAC Series Pumps
HAC / HAC+ / HIC+



HAC/HAC+ pumps are in compliance with 3-A Sanitary Standards, Inc. and offer these additional advantages:

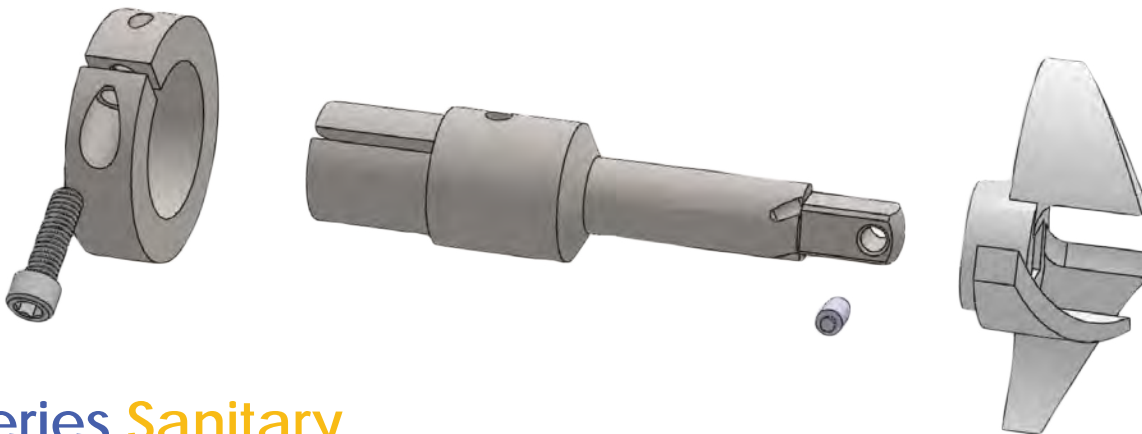
low cost • AC parts are 100% interchangeable with other brands • 316L stainless steel construction
stainless steel adapters are standard • optional NPT or flange connections • 10 day delivery



HAC+ Series Sanitary

HAC+ pumps are the first significant improvement in the traditional "HC Series" style of pumps in over a quarter of a century. These pumps offer an improved shaft design comparable to more expensive sanitary pumps, while retaining the hydraulic characteristics and external dimensions of the HAC product line.

- Clamped stub shaft and threaded impeller nut provide more stable performance
- External dimensions are the same as HAC pumps - no need to change piping
- Hydraulic performance is identical to the HAC pumps
- Casing, back plate, adapter, and seals are interchangeable
- Standard 10 day delivery



HAC Series Sanitary

HAC pumps are in compliance with 3-A Sanitary Standards, Inc. and offer these additional advantages:

- Low cost
- HAC parts are 100% interchangeable with other leading brands
- 316L stainless steel construction
- Stainless steel adapters are standard
- Optional NPT or flange connections



HIC+ Series Industrial

HIC+ pumps are based on the HAC+ design, but intended for non-sanitary applications.

- Pumps are constructed of 316L stainless steel
- Glass beaded finish with standard NPT connections and flanges optional
- Type 21 mechanical seal with multiple material options
- External dimensions are the same as the HAC/HAC+ pumps
- Hydraulic performance is identical to HAC/HAC+ pumps
- Every HIC+ pump includes a standard stainless adapter

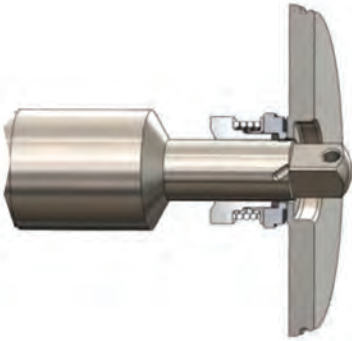


Bearing Frame

HAC/HAC+/HIC+

- Dual deep groove ball bearings
- Cast iron bearing frame
- D, DG, E, and Type 21 seals only, the bearing frame does not accommodate commercial double mechanical seals





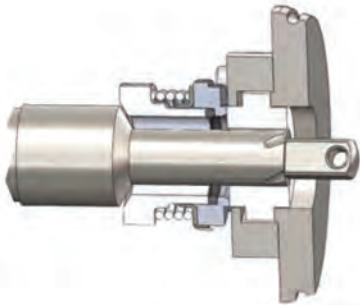
Type D External Balanced Seal

Well suited for multi-purpose use, this seal is designed to give long service life. Typical applications include:

- Dairy products
- Tomatoes
- Beverages

Also applicable for acid cleaning solutions and detergents.

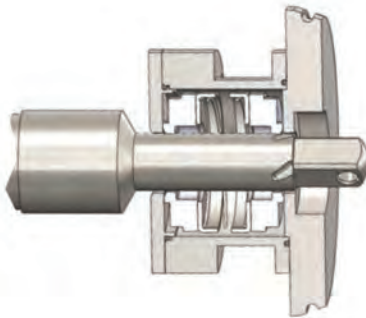
Seal materials: External balanced seal. Carbon/stainless steel



Type DG Seal/Seat

This long lasting seal assembly utilizes standard Type D rotating seal components plus choice of silicon carbide, ceramic or tungsten carbide stationary seal seat. For maximum corrosion resistance in pur water applications with abrasive or non-lubricating products. Stationary seat is reversible for quick changeover if one side is damaged. The standard seal material is silicon carbide.

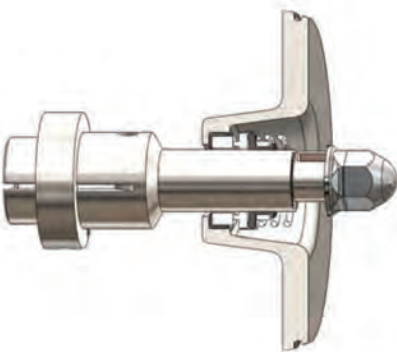
Seal materials: External balanced seal with replaceable stationary seat. Carbon/silicon carbide, carbon/ceramic, carbon/tungsten carbide.



Type E Water Cooled Balanced Double Seal

This water cooled balanced double seal can be pressurized to contain coolants or sealants which can be piped directly to drain. It is used in slurries, heavy duty vacuum applications (to 28"Hg), tacky products or products at temperatures up to 212°F.

Seal materials: Water cooled balanced double seal. Carbon/stainless steel.

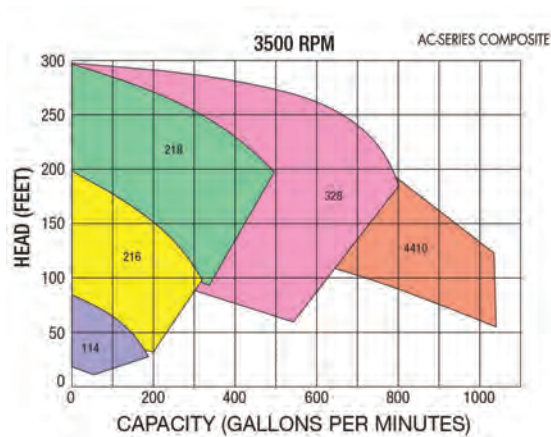
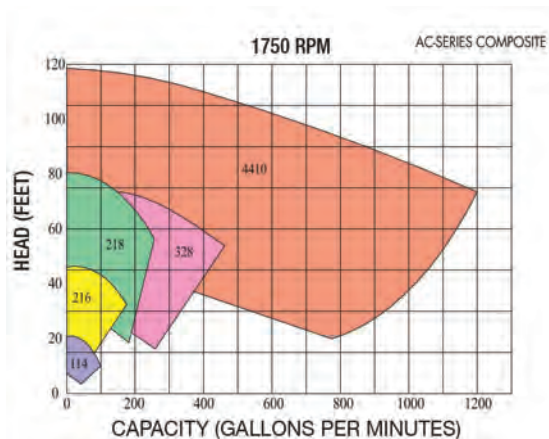


John Crane Type 21 Industrial Seal

- Single internal mechanical seal assembly
- Standard combination is ceramic versus carbon seal faces with buna elastomer, other combinations are available
- CIP supply and return for non-3-A or USDA applications

HAIGHT PUMP MODELS HAC/HAC+/HIC+	COMPETITOR MODEL	INLET	OUTLET	MAXIMUM IMPELLER
HAC/HAC+/HIC+114	C114	1.5"	1.5"	4"
HAC/HAC+/HIC+214	C214	2.0"	1.5"	4"
HAC/HAC+/HIC+216	C216	2.0"	1.5"	6"
HAC/HAC+/HIC+316	C316	2.5"	1.5"	6"
HAC/HAC+/HIC+218	C218	2.0"	1.5"	8"
HAC/HAC+/HIC+318	C318	3.0"	1.5"	8"
HAC/HAC+/HIC+328	C328	3.0"	2.0"	8"
HAC/HAC+/HIC+428	C428	4.0"	2.0"	8"
HAC/HAC+/HIC+4410	NOT AVAILABLE	4.0"	4.0"	10"
HAC/HAC+/HIC+6410	NOT AVAILABLE	6.0"	4.0"	10"

Construction materials: All models are made of 316L stainless steel



Motors: Motors are NEMA 56C or TC frame. All TC frame motors are EPACT efficiency.



COMMON APPLICATIONS

HAC/HAC+

Bottled water

Brewing

Poultry industry

Marinade solutions

Red water chillers

Carbonated beverages

Juice

Dairy

Pharmaceutical

HIC+

Hot water

Cold water

Glycol

Light chemicals

Water with particles

HAIGHT® **PUMP**

DIVISION OF: BAKER MANUFACTURING COMPANY, LLC.

Baker Manufacturing Company, LLC

133 Enterprise Street • Evansville, WI 53536

(608) 882-5100 • (800) 871-9250 • Fax (608) 882-3777

www.haightpump.com

Haight Pump - HAC HAC+ HIC+ Series Centrifugal Pumps