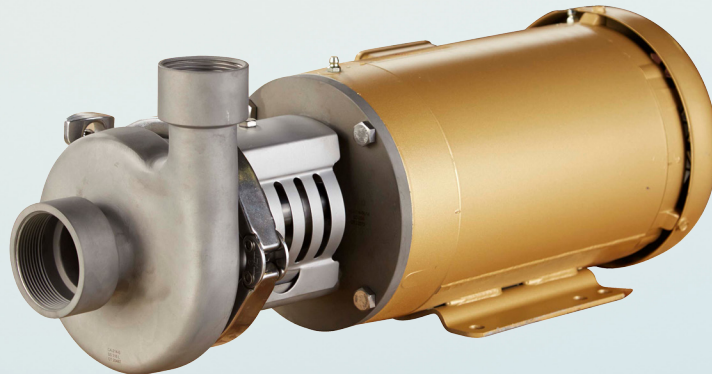


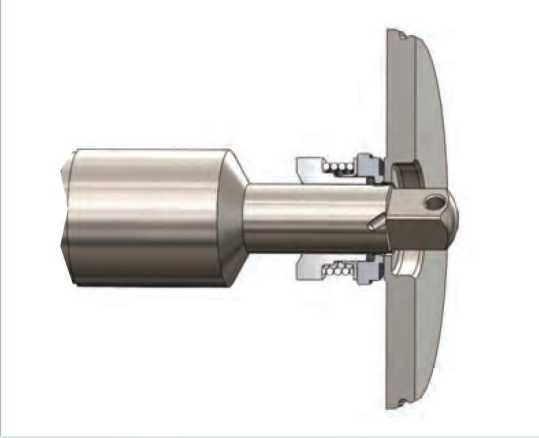
HIC+ Series Industrial Stainless Steel Pumps



- ❑ Constructed of 316L stainless steel
- ❑ Glass beaded finish
- ❑ Standard NPT connections and flanges optional
- ❑ Type 21 mechanical seal with multiple material options
- ❑ Includes standard stainless adapter
- ❑ Ideal for non-sanitary applications

FOR MORE INFORMATION CONTACT

HAIGHT PUMP • 133 ENTERPRISE STREET • EVANSVILLE, WI 53536 • HAIGHTSALES@BAKER-MFG.COM
WWW.HAIGHTPUMP.COM



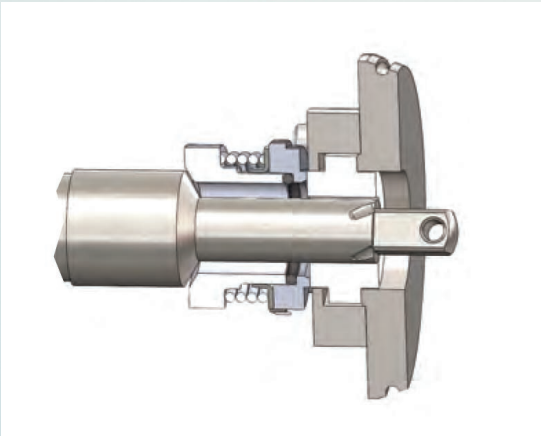
Type D External Balanced Seal

Well suited for multi-purpose use, this seal is designed to give long service life. Typical applications include:

- Dairy products
- Tomatoes
- Beverages

Also applicable for acid cleaning solutions and detergents.

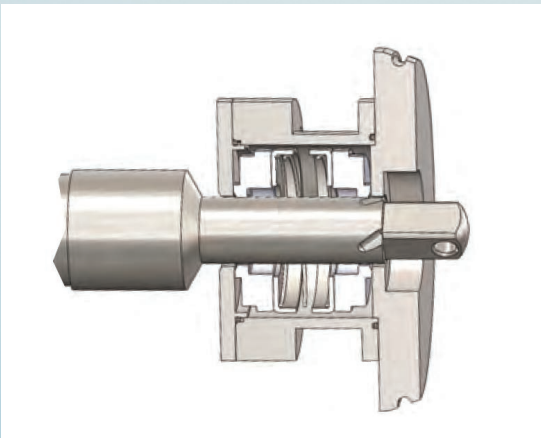
Seal materials: External balanced seal. Carbon/stainless steel



Type DG Seal/Seat

This long lasting seal assembly utilizes standard Type D rotating seal components plus choice of silicon carbide, ceramic or tungsten carbide stationary seal seat. For maximum corrosion resistance in pure water applications with abrasive or non-lubricating products. Stationary seat is reversible for quick changeover if one side is damaged. The standard seal material is silicon carbide.

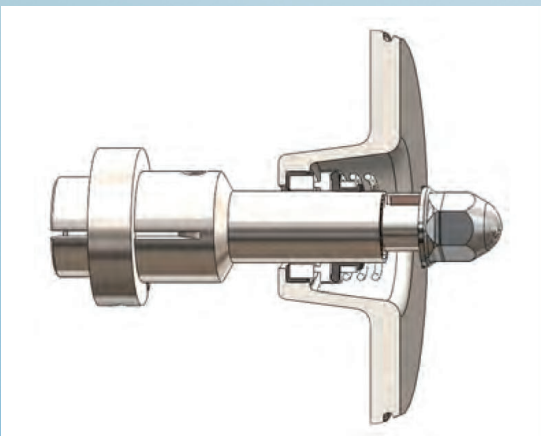
Seal materials: External balanced seal with replaceable stationary seat. Carbon/silicon carbide, carbon/ceramic, carbon/tungsten carbide.



Type E Water Cooled Balanced Double Seal

This water cooled balanced double seal can be pressureized to contain coolants or sealants which can be piped directly to drain. It is used in slurries, heavy duty vacuum applications (to 28"Hg), tacky products or products at temperatures up to 212°F.

Seal materials: Water cooled balanced double seal. Carbon/stainless steel.

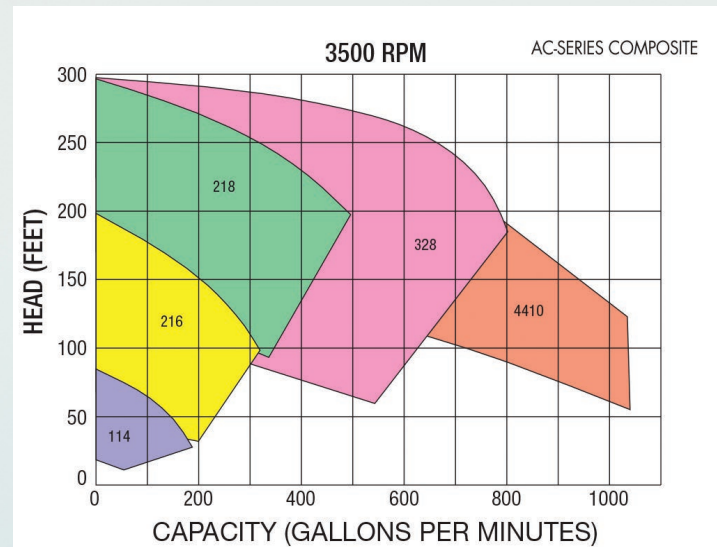
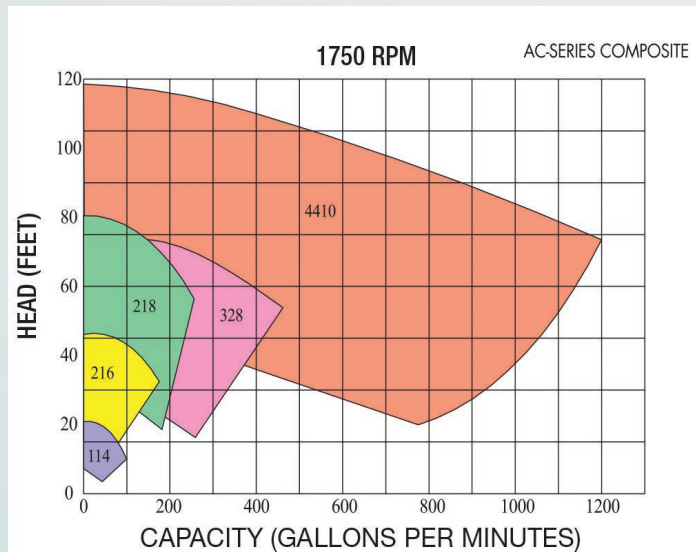


John Crane Type 21 Industrial Seal

- Single internal mechanical seal assembly
- Standard combination is ceramic versus carbon seal faces with buna elastomer, other combinations are available
- CIP supply and return for non-3-A or USDA applications

Haight Pump HIC+ Series

Industrial Stainless Steel Pumps



HIC+	COMPETITOR MODEL	INLET	OUTLET	MAXIMUM IMPELLER
HIC+114	C114	1.5"	1.5"	4"
HIC+214	C214	2.0"	1.5"	4"
HIC+216	C216	2.0"	1.5"	6"
HIC+316	C316	2.5"	1.5"	6"
HIC+218	C218	2.0"	1.5"	8"
HIC+318	C318	3.0"	1.5"	8"
HIC+328	C328	3.0"	2.0"	8"
HIC+428	C428	4.0"	2.0"	8"
HIC+4410	NOT AVAILABLE	4.0"	4.0"	10"
HIC+6410	NOT AVAILABLE	6.0"	4.0"	10"

Construction materials: All models are made of 316L stainless steel

Common Applications

- Hot water
- Cold water
- Glycol
- Light chemicals
- Water with particles

Motors: Motors are NEMA 56C or TC frame. All TC frame motors are EPACT efficiency.

FOR MORE INFORMATION CONTACT

**HAIGHT PUMP • 133 ENTERPRISE STREET • EVANSVILLE, WI 53536 HAIGHTSALES@BAKER-MFG.COM
WWW.HAIGHTPUMP.COM**