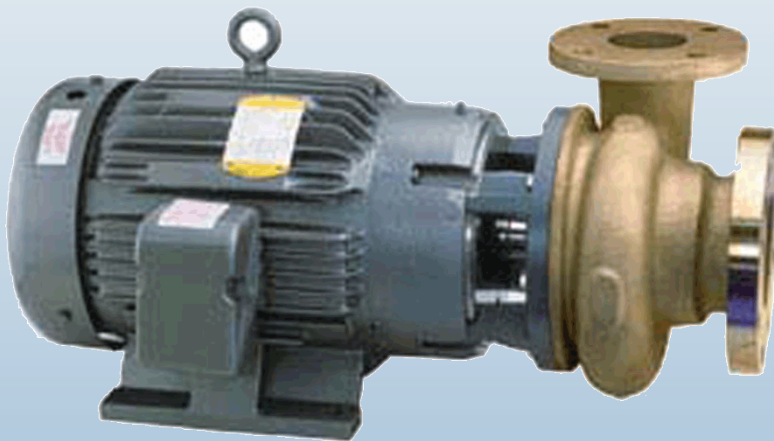


Nickel Aluminum Bronze Pumps for Saltwater Applications



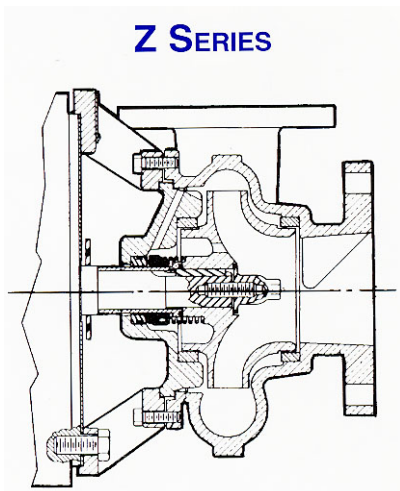
Nickel Aluminum Bronze Pumps for Saltwater Applications

Haight is pleased to offer nickel aluminum bronze centrifugal pumps that are ideally suited for saltwater, brackish water, waste water, and pollution control applications. The wetted ends are constructed of ASTM-B-148 C958, commonly referred to as CDA958. The overall corrosion/erosion resistance of nickel aluminum bronze to saltwater is superior to stainless steel—and at a lower cost.

Haight nickel aluminum bronze pumps, the HK and HZ Series, are American Bureau of Shipping (ABS) approved.

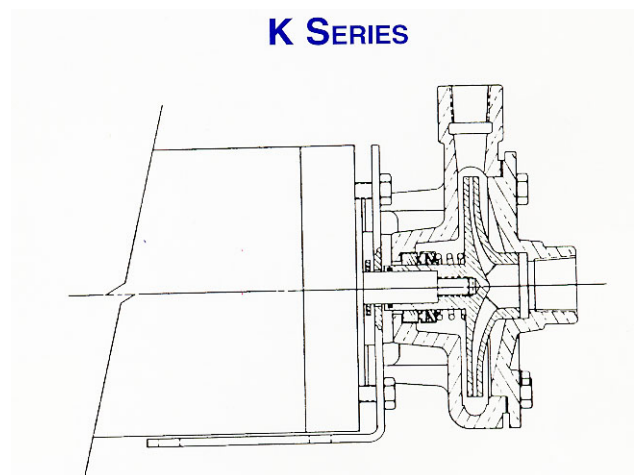
In addition to exceptional corrosion resistance, nickel aluminum bronze offers these features:

- Resists erosive wear due to the high velocities developed by the rotating impeller
- Resists the immense stress incurred during a cavitating condition
- Resists fouling which can reduce efficiency and promote a more severe crevice corrosion attack
- Even in a down state, CDA958 provides better protection against the saltwater pitting seen in stainless steel pumps.

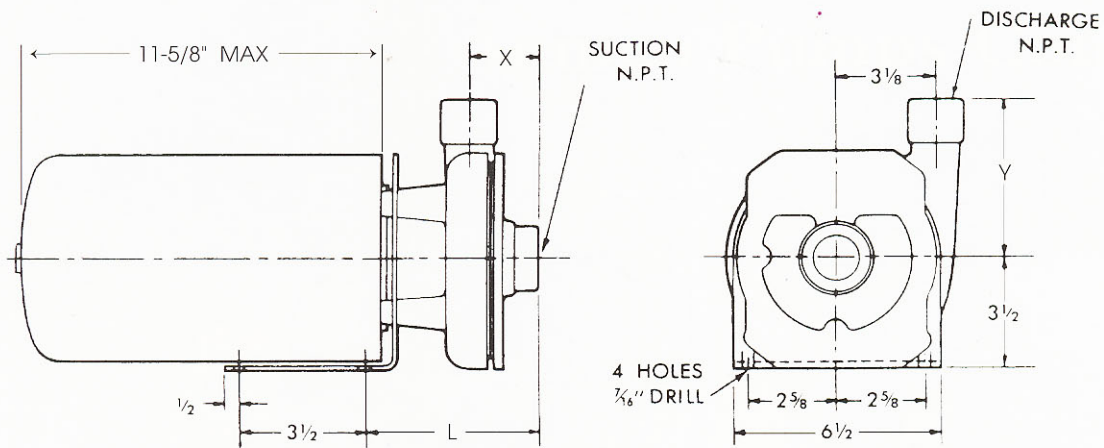


The US Navy has been using CDA958 (MIL24480) for more than forty years. Commercial saltwater applications include booster pumps and supply pumps on water treatment systems (including reverse osmosis, distillation, and desalinization). These pumps have multiple uses on board vessels: bilge, ballast, engine cooling, condenser cooling, refrigeration, wash down, salt water supply, circulation, and fire pumps.

The design of Haight pumps results in higher efficiencies, longer life, and lower energy and maintenance costs. Each series of pump is available in either close-coupled or frame-mounted versions. The Z series offers multiple sealing options to meet the most demanding applications.



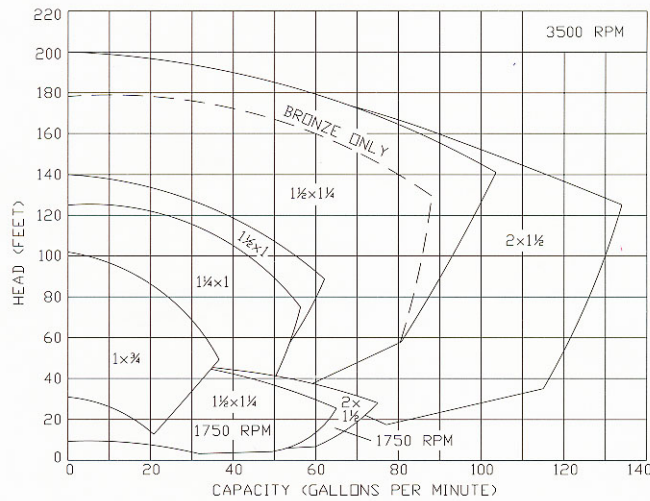
For more information contact:
Haight Pump • 133 Enterprise St. • Evansville, WI 53536 • 800-871-9250 • Fax: 608-882-3777 • haightpump.com



Dimensions are approximate, for reference only.

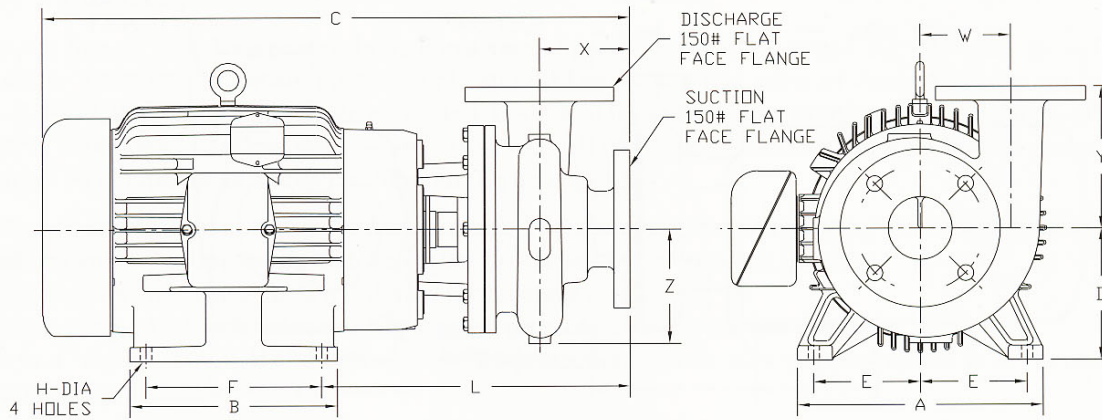
PUMP		MOTOR-TEFC			DIMENSIONS IN INCHES				
TYPE	SIZE	FRAME	H.P.*	RPM	SUCTION	DISCHARGE	L	X	Y
KC2	1 X 3/4	56J	1	3500	1	3/4	6	2 3/8	4 9/16
KC2	1 1/4 X 1	56J	2	3500	1 1/4	1	5 7/8	2 7/32	5
KC2	1 1/2 X 1	56J	3	3500	1 1/2	1	6	2 13/32	5
KC2	1 1/2 X 1 1/4	213JM	7 1/2	3500	1 1/2	1 1/4	12 13/32	2 13/16	6 1/2
KC2	2 X 1 1/2	213JM	7 1/2	3500	2	1 1/2	12 13/32	3 3/4	6 3/4

*The Horsepower listed is typically for a full diameter impeller. Other 56J Frame Motors include 1/2 and 3/4 HP.



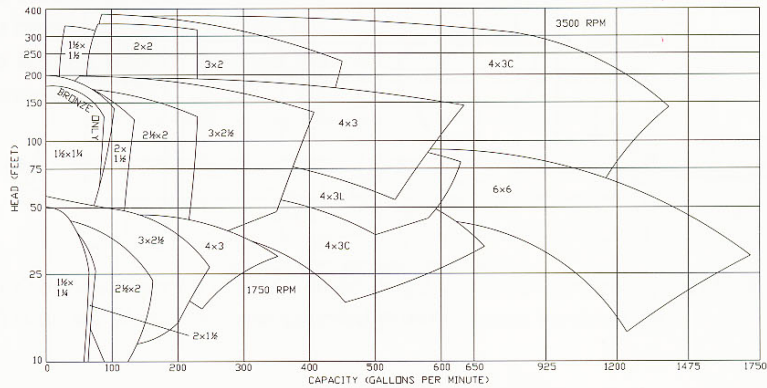
CHARACTERISTICS INCLUDE:

- Allowable Working Pressure — up to 150 psi
- Temperatures to 225°F
- Multiple Sealing Options
- Enclosed Impellers
- Close coupled to Nema Standard Jet Pump Motor, Std. MG1-18.340



Dimensions are approximate, for reference only.

PUMP		MOTOR-TEFC			DIMENSIONS IN INCHES													
TYPE	SIZE	FRAME	H.P.	RPM	SUCT.	DISCH.	A	B	C	D	E	F	H	L	W	X	Y	Z
ZC2	1½ X 1¼	143JM	1	1750	1½	1¼	7	6	17¾	3½	2¾	4	1⅜	10¾	3⅜	3⅜	6½	4⅜
ZC2	1½ X 1¼	213JM	7½	3500	1½	1¼	10½	7½	21⅜	5¼	4¼	5½	1⅜	12⅜	3⅜	3⅜	6½	4⅜
ZC2	1½ X 1½	182JM	3	1750	1½	1½	8⅝	6½	21⅝	4½	3¾	4½	1⅜	12	5⅝	4⅜	6½	6⅝
ZCH2	1½ X 1½	256JM	20	3500	1½	1½	11½	11½	29⅝	6¼	5	10	1⅜	14½	5⅝	4⅜	6½	6⅝
ZC2	2 X 1½	213JM	7½	3500	2	1½	10½	7½	21½	5¼	4¼	5½	1⅜	12⅜	3⅜	3⅜	6¾	4⅜
ZC2	2½ X 2	215JM	10	3500	2½	2	10½	9	23¾	5¼	4¼	7	1⅜	13⅜	4	4⅜	7⅜	4⅜
ZC2	3 X 2½	183JM	3	1750	3	2½	9	6½	19¾	5½	3¾	4½	1⅜	12⅜	4¼	4¼	6¾	5⅜
ZC2	3 X 2½	215JM	10	3500	3	2½	10½	9	24	5¼	4¼	7	1⅜	13⅜	4¼	4¼	6¾	5⅜
ZCH2	3 X 2½	256JM	20	3500	3	2½	12½	12½	31⅜	6¼	5	10	1⅜	14¾	4¼	4¼	6¾	5⅜
ZC2	4 X 3	213JM	5	1750	4	3	10½	7½	24⅜	5¼	4¼	5½	1⅜	13⅜	4½	5⅜	6½	6
ZC2	4 X 3	215JM	10	3500	4	3	10½	9	25⅜	5¼	4¼	7	1⅜	13⅜	4½	5⅜	6½	6
ZCH2	4 X 3	286JM	30	3500	4	3	14	14	32⅜	7	5½	11	1⅜	15⅜	4½	5⅜	6½	6
ZC2	4 X 3C	215JM	10	1750	4	3	9½	8	24⅜	5¼	4½	7	1⅜	12⅜	—	3⅜	9⅜	7
ZCH2	4 X 3C	326JM	50	3500	4	3	14½	14	34¼	8	6¼	12	1⅜	14⅜	—	3⅜	9⅜	7
ZCH2	4 X 3L	256JM	20	1750	4	3	11½	11½	30½	6¼	5	10	1⅜	15⅜	6	5⅜	8	7⅝
ZC2	6 X 6	256JP	20	1750	6	6	11½	11½	30¼	6¼	5	10	1⅜	17⅜	8	2⅜	9	10
ZCH2	2 X 2	286JM	30	3500	2	2	12¾	12¾	32¼	7	5½	11	1⅜	14⅜	5½	3¾	7¾	6½
ZCH2	3 X 2	256JM	20	3500	3	2	11½	11½	29⅜	6¼	5	10	1⅜	14⅜	5⅜	4½	7¾	6½



CHARACTERISTICS INCLUDE:

- Allowable Working Pressure — up to 175 psi
- Temperatures to 250°F
- Multiple Sealing Options
- Internal Seal Flush
- Replaceable Wear Rings
- Close coupled to Nema Standard “JM” motors

For more information contact:
 Haight Pump • 133 Enterprise St. • Evansville, WI 53536 • 800-871-9250 • Fax: 608-882-3777 • haightpump.com