
2023 Pocket Portfolio



Focus 2.0



Vectra



Hexy



Movi



Paséa



Gobi

Discover premium seating solutions —
at a fraction of the price.

Fortune 500 companies rely on us
for smart, innovative solutions.



California born and bred

We're a leading manufacturer of commercial solutions in the U.S. — and #1 in task chairs. From tables and lounge to screens and more, we've been the go-to destination for comprehensive, build-to-order solutions for almost 25 years. We combine award-winning design with the fastest lead times around, and our design and planning services can turn product innovation into your space inspiration. We're able to build almost any specification you want, deliver it when you need it, and offer a level of value no one can match. It's all part of our indie California spirit and drive to be the one place you go for any (and every) space.

Table of Contents

Task Chairs

- P/4 Vectra, Torsa, Hexy
- P/5 Focus 2.0, Novo, Wit
- P/6 Amplify, Focus, ReAlign
- P/7 Non-Stop, Knack, TR2

Executive & Conference Chairs

- P/8 Prava, Sona, Glove

Side Chairs

- P/9 Qwiz, Mika, Focus Side
- P/10 Baja, Cora, Sprout
- P/11 Orbix, Wit Side
- P/12 Freelance, Achieve

Multipurpose Chairs

- P/13 Rio, OnCall, Rowdy
- P/14 Lumin, InFlex, Anytime
- P/15 Movi, Relay

Collaboration Chairs

- P/16 Ioniq, Mavic

Lounge Seating

- P/17 Paséa, Cameo, Nano
- P/18 Envoi, Gobi, Aviera
- P/19 Visit Modular, Composium

Tables

- P/20 Cameo, Aviera, Mezzanine
- P/21 Parallon, Prise, Tensor
- P/22 HiQ, Switchback, Uni

Screens

- P/23 Motif, Doodle
- P/24 Sector

Accessories

- P/25 Mobio, King Cobra, Unity G2
- P/26 eBeam, EON, Current
- P/27 Power Strip, High Tide, Mobile Pedestal
- P/28 Cable Caddy
- P/29 Pencil Drawers, Laptop Accessories
- P/30 Lighting, Anti-Fatigue Mat
- P/31 CPU Storage, Under Desk
- P/32 Keyboard Mechanisms
- P/33 Keyboard Trays

- P/34-37 Find Your Seat
- P/38-39 Mechanism Options
- Back Cover Showrooms/Contact Information

Task Chairs



Vectra

- Proprietary lumbar tension with quick-adjust slide knobs
- 13 accent colors
- Six colors of ultra-sheer micro mesh
- Advanced synchro mechanism and cantilever arms
- Aerodynamic with low-profile arms and slim arm pads
- Performance casters are included



Focus 2.0

- Slimmer, refined design
- Swivel-tilt and enhanced synchro mechanisms
- Modernized Y-support
- Three frame and four base colors, including 12 accent colors
- Available in Focus mesh, Focus 2.0 mesh and Focus Uptown mesh
- Adjustable lumbar support included



Torsa

- Cutting-edge design featuring enhanced synchro with Comfort Drive®
- Multiple frame, back support and arm color combinations
- 10 mesh back colors
- Optional adjustable lumbar support



Focus 2.0

- Choose from midback task, highback task and midback stool models
- Adjustable lumbar support included
- 12 mesh back colors
- Three frame and lumbar support colors
- 13 lumbar accent colors
- Basic, standard synchro and swivel tilt mechanism options
- Three arm types



Hexy

- Extra-wide backrest with innovative hexagon core provides integrated ergonomics
- Ultra-supportive performance mesh fuses with a lightweight frame
- Aerodynamic adjustable arms and pull handle offer active comfort and convenience
- 10 mesh colors and three frame colors let you customize your way
- Mechanism options: Basic, standard synchro or swivel-tilt
- Adjustable arm options, height only or height and width



Wit

- Choose from midback task, highback task and task stool models
- Adjustable lumbar support included
- Built-in pull handle
- Four woven striped and 12 solid mesh back colors
- Three frame colors

Task Chairs



Amplify

- Choose from midback mesh, highback mesh or highback upholstered task models
- Task stools come in midback mesh or highback upholstered models
- Multiple frame, back support, arm and base color combinations
- Adjustable lumbar support
- 10 mesh back colors
- Mesh back model features contrast stitching
- Enhanced synchro or swivel-tilt mechanism



Non-Stop

- Solid steel infrastructure and sculpted foam cushions for 24-hour ergonomic support
- Reinforced steel-plate back height adjustment
- Size three weight capacity: 500 lb



Focus

- Unique Y-shaped back support with integrated lumbar
- Midback or highback
- Two striped and three solid mesh back colors
- Five arm style and two arm pad options
- Standard or designer casters
- Optional adjustable lumbar support



Knack

- Choose from task and task stool models
- Durable and ergonomic
- Five control mechanisms for comfort and support
- Back height adjustment
- Optional ballistic nylon back



ReAlign

- Choose from midback task, highback task and task stool models
- Six control mechanisms
- Slim, modern profile
- Ergonomic concave/convex back
- Back height adjustment



TR2

- Internal back height adjustment
- Five control mechanisms for motion and comfort
- Waterfall seat promotes proper leg circulation
- Six arm styles

Executive & Conference Chairs

Side Chairs



Prava

- Sleek European design by Jorge Pensi
- Plush molded-foam construction with double-stitch detailing
- Three arm styles and four base options
- Highback models feature matching headrest option



Qwiz

- Flip-up seat for high-density nesting
- Perforated seat and back for breathability
- Three shell and frame colors
- 12 bleach-cleanable mesh back colors
- Upholstered seat or fully upholstered
- Interlocking system for easy ganging
- Available as an armless option
- Performance casters or standard multi-surface glides



Sona

- Designed by Jorge Pensi
- Easy back height adjustment
- 11 designer knit colors
- Waterfall seat promotes proper leg circulation
- Optional pull handle for easy mobility



Mika

- Designed by ITO Design
- Base options include 4-leg, wire rod, wire rod counter stool and wire rod bar stool
- Single-piece shell with 15 degrees of backrest flex
- Sculpted shell provides a natural cradle
- Optional 2/3 upholstered seat
- Three neutral shell colors
- White, black, fog and chrome frame finishes
- Upholstered model stacks up to 9 chairs on the floor



Glove

- Choose from executive, conference and task chairs in midback or highback models
- Luxurious pillow-top padding
- Executive model features an ergonomic, one-piece shell and optional button detail



Focus Side

- Mesh back, wood back or fully upholstered
- 15 mesh back colors*
- Two wood back styles in four finishes
- Black or silver accents
- Mesh/upholstered models stack four/three on the floor, five/three on the cart

*In addition to the standard Focus mesh colors, Focus Side is available in the same mesh colors as Amplify.

Side Chairs



Baja

- Scale and sculpture offer a roomier, more comfortable sit
- Seamless design and broad collection create cohesion in any space
- Residential-inspired features and options, including standard and low-back stools
- Responsive, single-piece shell offers 18 degrees of backrest flex
- Bases include wire rod, wire rod stool and 4-leg with casters or glides



Orbix

- Upscale stacking chair with bold lines
- Ultra-supportive, extra-wide backrest
- Hundreds of diamond-cut perforations offer unmatched breathability
- Integrated clean-out makes it easy to wipe down
- Collection includes wire rod, bar stool, light task and task stool
- Plastic wire rod stacks 6 on the floor (25 on a cart); plastic bar stool stacks 6 on the floor



Cora

- Easy to maintain with clean-out space and field-replaceable components, including seat and back
- Wall-saver frame keeps everything fresh, preventing scuffs and marks
- Looped arms are streamlined yet wide enough to sit down and get up with ease
- 15,000+ textiles plus bleach-cleanable, ballistic nylon and multi-upholstery options
- Curated collection with five weight capacity warranties: guest (500 lb), midsize (600 lb), bariatric (750 lb), easy-access hip (500 lb), and stool (500 lb)



Wit Side

- Complements Wit task chair and Wit task stool
- Upholstered seat or plastic seat in three colors
- 12 Thintex® and mesh back colors
- Built-in pull handle
- Black or silver frame
- Wall-saver frame design



Sprout

- Ergonomic contouring with 10-degree flexing back provides superior comfort
- Slim lines and silhouette complement an array of environments
- Large clean-out makes cleanup quick
- Ganging option locks chairs together effortlessly
- 9 shell colors and 2 frame colors
- 300 lb weight capacity warranty



Side Chairs



Freelance

- Side, stool and bariatric models
- Multiple plastic shell colors
- Two frame finishes
- Comes in fabric, vinyl or plastic
- Bariatric models rated to 500 or 1,000 lbs
- Stacks 4 on the floor, 6 on the optional cart



Achieve

- Ergonomically contoured shape for maximum support
- Waterfall seat promotes proper leg circulation
- Wall-saver frame design

Multipurpose Chairs



Rio

- 4-leg and wire rod stacking chair, counter and bar stools, light task and task stool models
- Transitional design
- Fully upholstered, upholstered seat only or plastic
- ARC Technology® weight-assisted flexback
- 14 plastic shell color options
- Folding tablet arm optional
- Three frame finishes with matching arm pads



OnCall

- Choose from task, side and stool models
- Plastic, upholstered seat only or upholstered seat and back
- Multiple plastic shell color options
- Black or chrome frame
- Cut-out handle for easy mobility
- Stacks 8 on the floor, 20-25 on the optional cart



Rowdy

- Sturdy, wire-frame construction
- 14 plastic shell color options
- Cutout handle for easy mobility
- Black or chrome frame
- Plastic armless model stacks 15 on the floor, 40 on the optional cart
- CAL 133 approved models

Multipurpose Chairs

Lumin



- Contemporary design with perforated back
- 4-leg and wire rod stacking chair, counter and bar stools, light task and task stool models
- Fully upholstered, upholstered seat only or plastic
- 14 plastic shell color options
- Optional folding tablet arm
- Three frame finishes with matching arm pads

InFlex



- Innovative flex disc system emulates the human spine
- Task, side and stool models
- Upholstered armless models stack 5 on the floor, 10 on the optional cart
- Fully upholstered, upholstered seat only or plastic
- Multiple plastic shell color options
- Optional tablet arm
- Plastic models stack 5 on the floor, 12 on the optional cart

Anytime



- Perforated shell keeps you cool and comfortable
- Choose from task, side and stool models
- Fully upholstered, upholstered seat only or plastic
- Multiple plastic shell color options
- Cutout handle for easy mobility
- Black or silver tubular frame
- Stacks 6 on the floor, 8 on the optional cart

Movi



- Choose from nester, light task & task stool models
- Easier to nest thanks to a slim, lightweight frame
- Flexes at the hip 14 degrees for enhanced comfort
- Three back frame & arm colors
- Three base frame & caster colors
- 12 mesh colors
- Fixed arm or armless option
- 300 lb weight capacity warranty



Relay



- Choose from task, side and multipurpose nester models
- Durable, structurally reinforced back
- Made from high-impact polypropylene
- Multiple plastic shell color options
- Stacks 5 on the floor, 5 on the optional cart
- All nesting styles vertically stack 3 on the floor



Collaboration Chairs



Ioniq

- Breathable back with built-in lumbar
- Minimalist-designed mechanism
- Edge-to-edge cushion
- Fully integrated armrests
- Single-piece sculpted shell
- 4-leg, 4-star or 5-star base
- Performance casters (5-star base) or glides

Lounge Seating



Paséa

- Designed by Qdesign
- Wide variety of bench, seat and ottoman options
- Rectilinear and curvilinear setups
- Promotes active working posture
- Extra convenience with power options



Mavic

- Designed by Martin Ballendat
- Slim single-piece frame design
- Swivel-tilt or weight-activated mechanism
- 8-hour endurance cushion
- Built-in lumbar support from tension mesh
- Tapered seat pan
- Three frame and base, 10 mesh and 12 accent color options



Cameo

- Designed by Claudio Bellini
- Lightweight, modern look with slim ribbon legs
- Single seats and 2- and 3-seater benches
- Designed for traditional and modular configurations

See page 20 for Cameo tables.

Nano



- Effortless and fun to design
- Reconfigurable on the spot to adapt to any space
- Dual-upholstery option for a more refined look
- Two solid surface and five laminate tabletop options

Lounge Seating



Envoi

- Designed by Claudio Bellini
- Backrest flexes
- Petal-like pieces surround with comfort
- Available in midback or highback
- 4-star base available in three wood or metal finishes
- Optional auto-return cylinder base
- Dual-fabric seat cushion



Visit Modular

- Armless or single arm chair for modular seating
- Multiple upholstery options
- 10 foot styles
- Ganging brackets available
- Back hook/handle and tablet arm options
- Power module option



Gobi

- Minimalist design
- Crisp lines and tailored stitching
- Flared arms offer more room
- Soft, sculpted curves
- Multiple upholstery options on seat cushion
- Optional auto-return cylinder base
- Metal base available in three finishes



Composium

- Club, settee, sofa, ottoman and three bench sizes
- Durable steel-rail construction
- PatternMatch® expertise and multiple-upholstery option
- Field-replaceable parts
- Three arm shape options, three back types, four valance styles, 11 foot styles
- Power module option



Aviera

- Wall-saving frame design with clean-out space
- Steel understructure with metal joints
- Easy-to-clean aluminum frames
- Silver ion anti-microbial wood frames
- Field-replaceable parts
- PatternMatch® and moisture barrier available

See page 20 for Aviera linking tables.

Tables

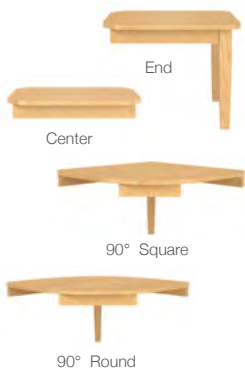
Cameo

- Complement seating with freestanding and modular inline tables
- Build tables using five laminate top options



Aviera

- Tables link to Aviera chairs and multi seating
- Build table tops in wood, laminate or solid surface material
- Choose from one solid surface, four wood and nine laminate finish options
- Select wood or metal legs



See page 16 for Aviera chairs and multiseating.

Mezzanine

- Stain-to-match program
- Cube or occasional design
- Four custom stain finishes
- Three edge styles and multiple leg heights and designs



Parallon

- A broad yet curated collection that's easy to specify across countless applications
- Training, collaboration, café or occasional – enjoy a variety of table types, tops, bases and more
- Multiple power solutions include standalone corded power, daisy chain corded power, and hardwired power options
- Powder-coated metal finishes in black, white or silver
- Multiple durable laminate options



Prise

- Steel frame construction
- Power and wire management included
- Center aluminum extrusion makes screen mounting easy
- Available in 2, 4, 6, and 8 seat options



Tensor

- Steel dual-isosceles triangle design evenly distributes and supports weight throughout
- Accommodates tabletops from 30 inches (D) x 30 inches (W) to 30 inches (D) x 72 inches (W)
- 300 lb weight capacity warranty



Tables



HiQ

- Take ergonomics to a new level with push-button height adjustability
- Customize build-outs to fit your corporate, healthcare and education environments
- Maximize power and data access with up to six outlets per workstation
- Add a little privacy in shared setups with any Motif or Doodle screen as well as optional laminate boundary screens

Switchback

- Height range of 22.6-48.7 inches (including 1 1/8 inch top)
- Push-button controls with four user-customized positions
- A wide array of laminate options
- 3 durable powder-coated metal finishes in silver, black or white
- Adjustment speed: 1.5 inches per second



Uni



Laptop Table

- Ample surface provides plenty of room to work
- Sleek laminate top features a low-profile knife edge
- Easy-grip finger groove makes moving easy
- Durable base is ultra-slim for safer high-traffic areas
- Multi-surface glides enhance mobility while protecting floors
- Top: 14 inches (D) x 20 inches (W) x .75 inches (H)
- Base: 11.6 inches (D) x 17.6 inches (W) x .25 inches (H)
- Overall height: 25.5 inches
- 100 lb weight capacity warranty

Screens



Motif: Worksurface

- Get customized privacy + protection with durable fabrics designed to heal from pins, thumbtacks and more that are bleach-cleanable, helping protect against COVID-19
- Eco-friendly, single-piece construction features a HexaCore honeycomb center, providing rigidity with less weight
- Compatible with most mounts, including edge, middle, top, midway, freestanding, panel and height-adjustable

Motif: Freestanding



- Mobile and freestanding screens are an easy-to-deploy solution for environments always in motion
- Quick installation creates safer, color-coordinated spaces in minutes
- Durable fabrics designed to heal from pins, thumbtacks and more
- Find privacy + protection with fabrics that are bleach-cleanable, helping protect against COVID-19
- Eco-friendly, single-piece construction features a HexaCore honeycomb center, providing rigidity with less weight

Doodle: Worksurface



- Non-ghosting, durable writing surface can withstand endless scribbles and wipes
- Compatible with dry erase and wet erase markers
- Slim, straightforward design mixes well with any workspace
- Compatible with most mounts, including edge, middle, top, midway, freestanding, panel and height-adjustable

Sector: Worksurface



- Frosted acrylic provides essential privacy while clear acrylic allows for safe social interactions
- Compatible with most mounts, including edge, middle, top, midway, freestanding, panel and height-adjustable
- Resilient acrylic can withstand powerful cleaners and disinfectants, including EPA-approved COVID-19 products

Sector: Tabletop



- Tri-fold meeting screens are personal, mobile and adapt to the busy classroom or office easily
- Screens sit ready to protect interactions and small get-togethers
- Quick and easy tabletop installation means you can provide protection in seconds

Sector: Freestanding



- Easy-to-deploy solution for environments always in motion
- Frosted acrylic provides privacy while clear acrylic offers unimpeded protection
- Compact foot design allows for easy nesting and storing
- Resilient acrylic can withstand powerful cleaners and disinfectants, including EPA-approved COVID-19 products

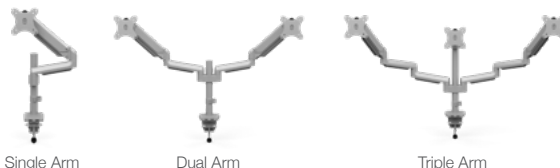
Sector: Seating



- Fixed, consistent distancing between chairs for safer spaces
- Compatible with Aviera, Freelance and Focus Side
- Interlocking mount easily transforms current seating configurations while creating more efficient floorplans
- Frosted acrylic provides privacy while clear acrylic allows for safe interactions

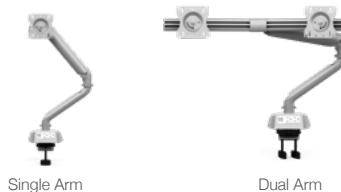
Mobio

- Single-desk, dual-desk and dual-array configurations
- Includes surface clamp and grommet mount, ideal for all desk mounting configurations
- Compact arm design maximizes desktop space
- Die-cast aluminum construction ensures stability and performance
- Provide power to any worksurface with optional add-on power modules or pass-through USB cables.



King Cobra

- Four configurations: Single, HD Single, HD Dual Array and HD Dual High Splitter
- Two power and two USB outlets
- Adjustable rotation limiter helps restrict arm rotation to 180 degrees
- Weight capacity: up to 20 lb; up to 30 lb for HD
- Clamp and grommet mount
- Quick-release VESA



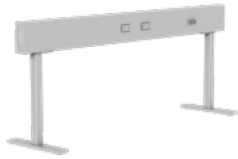
Unity G2

- Weight range: up to 17.6 lb per arm
- Maximum monitor size: 29 inches diagonal; 25.3 inches wide
- Maximum arm extension: 20.92 inches
- Gas height-adjustable
- 75 mm and 100 mm VESA mount
- 12 inches of lift
- 180-degree pan and 360-degree rotation



Accessories

eBEAM



- Cable management accessories
- Movable leg positions
- Seamless screen integration
- Toolless power installation
- Data adapter kit included

Power Strip



- 15 amps, 125 volt
- Cord: 8 feet
- 15-amp on/off switch with built-in circuit breaker
- Surge protection: 450 joules, LED indicator

EON



- Choose from dual-outlet or single-outlet/dual-USB setups
- AC outlet: 15A, 125V, 60Hz
- Quick-charge USB outlets: 3.1A, 5V
- Installs with surface mount clamp

High Tide



- Infinite height-adjustment increments with lockable gas spring
- Desktop supports up to 33 lb
- Desktop size: 17.8 inches (W) x 32.5 inches (L)

Current



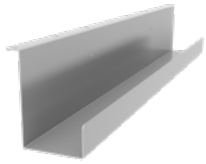
- 3 outlets, 2 USB ports
- 15 amps, 125 volts
- Cord: 10 feet
- Surge protection: 510 joules
- Two USB charging ports; 3.1A combined

Mobile Pedestal



- Optional cushion with colorful upholstery options
- Silver, black and white finish options
- 14.25 inches (W) x 19.625 inches (L) x 19.25 inches (H)

Accessories

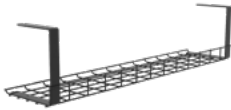


Cable Caddy

- 4.93 inches (W) x 36 inches (L) x 6 inches (H); channel: 3.85 inches (W) x 36 inches (L) x 2 inches (H); desk attachment: 1 inches (W)

Cable Caddy: Basket

- Silver and black finish options
- 6.13 inches (W) x 26.07 (L) x 6.36 inches (H); power strip platform: 4.81 inches wide



Cable Caddy: Slim

- Black finish only
- 2.50 inches (W) x 49 inches (L) x 1.13 inches (H)
- Wire channel: 1.59 inches (W)
- 6 inches (W) x 26 inches (L) x 6 inches (H)



Cable Caddy: Clips

- Includes three wire management pieces
- Place these grips anywhere you need cable control
- Easy installation with four screws
- Adjusts to different positions with ease



Rectangular Drawer



Half Moon Drawer

Pencil Drawers

- Divided storage compartments for pens, pencils and other small supplies
- Includes easy-to-follow assembly instructions
- Rectangular drawer
18.125 inches (W) x 22.75 inches (L) x 1.94 inches (H)
- Half Moon drawer
8.23 inches (W) x 13.60 inches (L) x 1.35 inches (H)
- Drawer extends 11.5 inches

Laptop Tray

- Adjusts left to right to fit in tight places
- Includes mechanism, track and mounting hardware
- Available in black finish only



Accessories

Lighting



- Motion-activated power button
- Built-in 12-hour automatic shut-off feature
- Mounts allow for infinite tilt adjustment for focusing the light

CPU Storage



- Supports most PC sizes (up to 64 inches in perimeter)
- Retracts on a 17-inch track with 360-degree swivel
- Quick and easy adjustments with an Allen key
- Weight capacity warranty: Up to 75 lb

Anti-Fatigue Mat



- Provides premium ergonomic comfort
- Durable single-piece construction
- 20 inches (D) x 30 inches (W)
- 5-year warranty

Under Desk



- Slide-and-swivel movement makes adjustment easy
- Features a 17-inch track
- Supports sizes 3.75-10.5 inches (W) x 16.5-24 inches (H)
- Weight capacity warranty: Up to 22 lb

Accessories

Keyboard Mechanisms



- Lift & lock provides 7 inches of height adjustment
- Includes knob for manual tilt adjustment
- 21.75-inch track

Premium Lift & Lock



- Lift & lock height adjustment with automatic tilt adjustment
- Patented height and tilt indicator
- 21.75-inch track

Mini Trackless



- Designed to attach and function without a track
- Easily attaches below top to avoid crossbar interference

Sit to Stand



- Lift & lock height adjustment with height range from 8 inches above the track to 6 inches below
- Control for tilt adjustment
- 23-inch track

Keyboard Trays



- Mouse on the same plane as keyboard instead of above or below
- Easily switch from left-to right-handed
- Includes mouse pad and mouse guard

Mini Plat



- Full functionality in small, compact package
- 19" wide

Crescent Board



- Designed to attach and function without a track
- Easily attaches below top to avoid crossbar interference

Swivel Board



- Swivel mouse tray with tilt adjustment
- Mouse pad includes palm rest and mouse guard

Find Your Seat

READY, SET, CUSTOMIZE Configure any of our task chairs to suit your space — we've got one for every desk, space and room.

LIGHTEN UP Our multipurpose chairs are also configurable as light task chairs.



Vectra



Torsa



Focus



Mavic



Ioniq



Movi



Amplify



Focus 2.0



Novo



Rio



Lumin



InFlex



Sona



Wit



Hexy



Anytime



OnCall



Relay



TR2



Knack



Non-Stop

Find Your Seat

THE HIGHER-UPS Discover customizable highback seating for executive and conference spaces.



PICK YOUR STOOL STYLE Many of our task chairs come in adjustable stool styles for counter-level workstations and bar spaces.



VERSATILE STYLE Lightweight and easy to clean, our multipurpose chairs come in stackable, tablet-arm and nesting styles.



WE'RE RAISING THE BAR Our multipurpose chairs are also configurable as light task stools.



Mechanism Options

COLLECTION	Standard Synchro	Enhanced Synchro	Advanced Synchro	Swivel-Tilt	Basic	Knee-Tilt	Multi-Function	Dual Torsion
Amplify		•		•				
Anytime				•	•			
Focus 2.0		•		•	•	•		
Focus		•		•	•	•		
Glove		•		•		•	•	
Hexy	•			•	•			
InFlex					•			
Knack	•	•		•	•		•	
Lumin					•			
Mavic				•				
Movi					•			
Non-Stop				•			•	•
Novo	•			•	•			
OnCall				•	•			
Orbix					•			
Prava		•		•		•		
ReAlign		•		•	•	•	•	
Relay				•	•			
Rio					•			
Sona		•		•		•		
Torsa		• with Comfort Drive						
Wit	•			•	•			
Vectra		•	•					

Mechanism availability may vary between models within a collection. Collections without mechanisms are not shown.

SitOnIt • Seating®

6415 Katella Avenue, Cypress, CA 90630

SHOWROOMS

Los Angeles

6415 Katella Avenue
Cypress, CA 90630



Chicago

222 Merchandise Mart Plaza, Suite 1150
Chicago, IL 60654



New York

11 East 26th Street, Suite 602
New York, NY 10010



San Jose

60 South Market Street, Suite 1150
San Jose, CA 95113

For the name and number of your local representative, contact us below or visit our website.

SitOnIt Seating

(888) 274-8664 | sales@sitonit.net | sitonit.net

The images used within this website or document represent the logical use of the product(s) offered. The textiles, frame colors, accessories and options depicted are subject to change without notice. Refer to the current price list or contact Customer Experience for the most up-to-date product information and specifications.

SitOnIt Seating, Achieve, Amplify, Anytime, Aviera, Cameo, Comfort Drive, Cora, eBEAM, Envoi, EON, Composium, Doodle, Focus, Freelance, Glove, Gobi, Hexy, InFlex, Ioniq, Knack, Lumin, Mavic, Mika, Mezzanine, Movi, Non-Stop, OnCall, Orbix, Paséa, Prava, Prise, Qwiz, ReAlign, Relay, Rio, Nano, Novo, Rowdy, Sector, Sona, Sprout, Switchback, Torsa, TR2, Uni, Unity G2, Vectra, Visit Modular and Wit are trademarks or registered trademarks of Exemplis LLC. All other trademarks are the property of their respective owners.