



Love
What
you
Do



STILL
LIFE



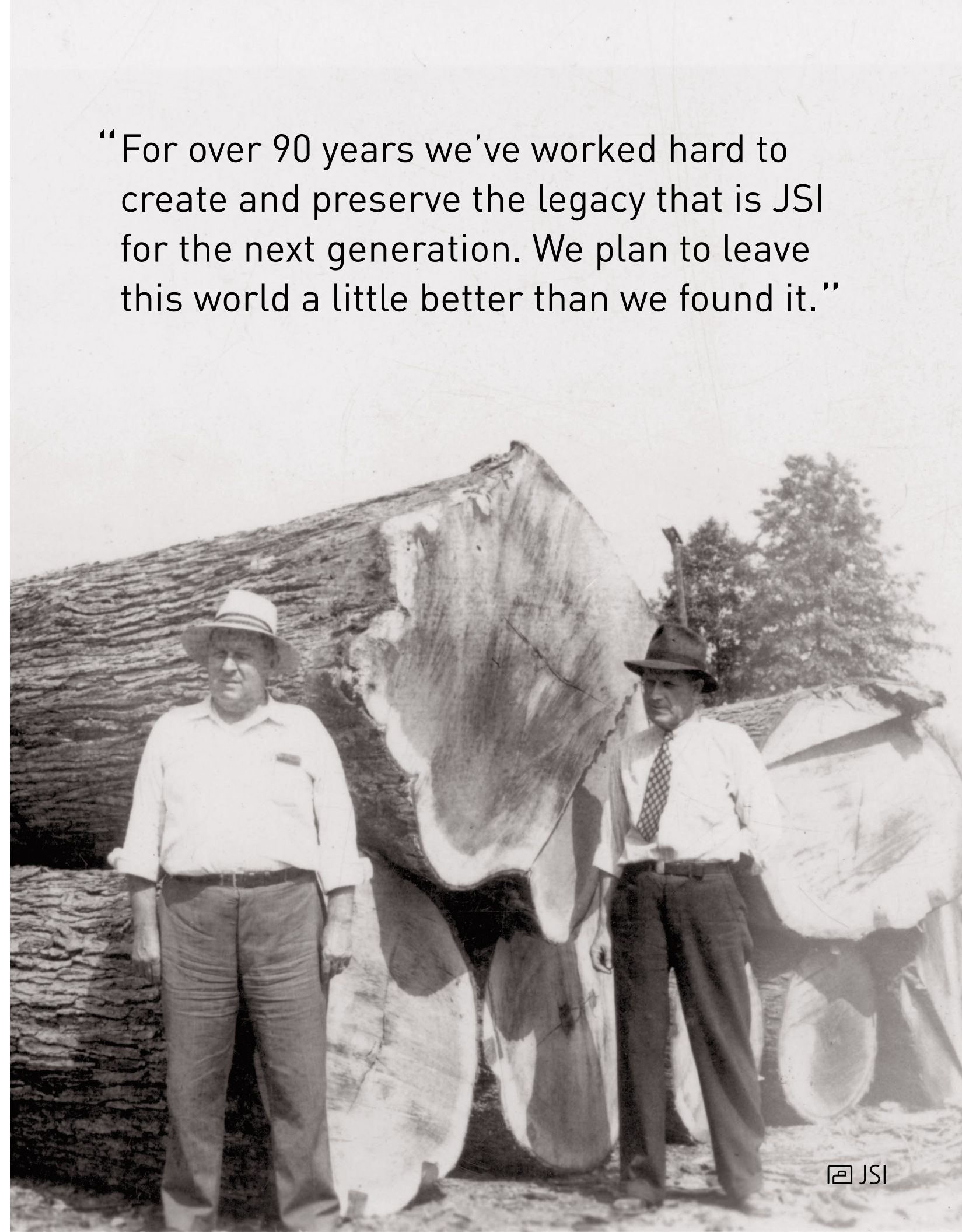
A LETTER FROM OUR CEO

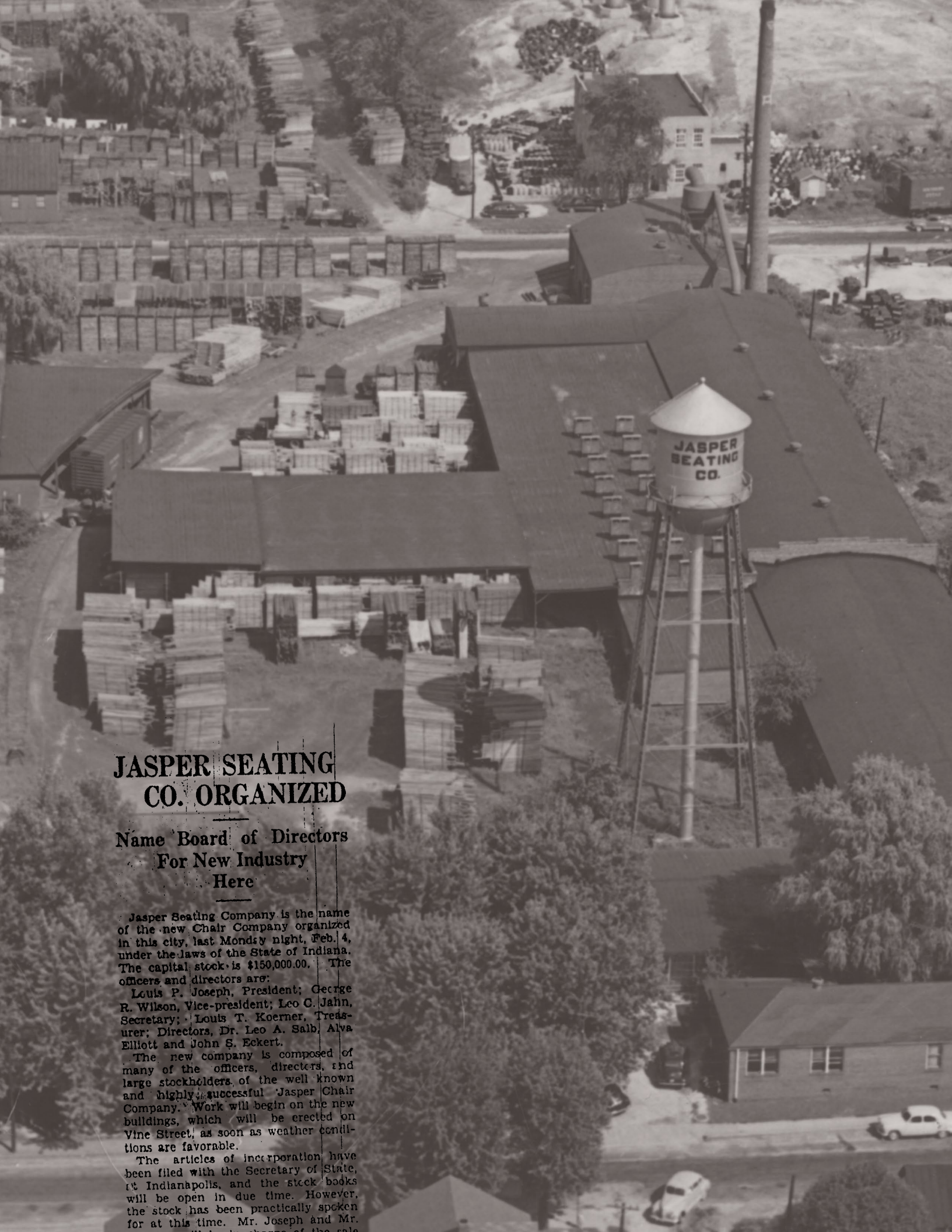
It's the right thing to do. A simple statement that powerfully has been the compass for our company for over a century. From the way we build our furniture to the way we interact with anyone we meet, it is ingrained in the fabric of JSI. When our founders built this company, they were committed to building long-lasting, quality chairs while utilizing their resources wisely. Our product offering has grown, but we still maintain the same commitment that if we use our resources wisely, we will leave a legacy of greatness for the next generation. Sustainability has become a subject of great interest in our industry, garnering lots of attention for those shouting from the rooftops what they have started doing. No shouting here, we will continue to love what we do, while continuing our values of how we do it. We wanted to share a sustainability update that will give you insight into our family of people, that love what they do while doing the right thing.

Michael J. Elliott

Michael J. Elliott
Chairman of the Board & CEO

“For over 90 years we’ve worked hard to create and preserve the legacy that is JSI for the next generation. We plan to leave this world a little better than we found it.”





JASPER SEATING CO. ORGANIZED

Name Board of Directors For New Industry Here

Jasper Seating Company is the name of the new Chair Company organized in this city, last Monday night, Feb. 4, under the laws of the State of Indiana. The capital stock is \$150,000.00. The officers and directors are:

Louis P. Joseph, President; George R. Wilson, Vice-president; Leo C. Jahn, Secretary; Louis T. Koerner, Treasurer; Directors, Dr. Leo A. Saib, Alva Elliott and John S. Eckert.

The new company is composed of many of the officers, directors, and large stockholders of the well known and highly successful Jasper Chair Company. Work will begin on the new buildings, which will be erected on Vine Street, as soon as weather conditions are favorable.

The articles of incorporation have been filed with the Secretary of State, at Indianapolis, and the stock books will be open in due time. However, the stock has been practically spoken for at this time. Mr. Joseph and Mr.

QUALITY FURNITURE FOR *work + life.*

Strongly rooted in the heart of the Midwest, generations of our furniture family have been proudly practicing their craft in southern Indiana since the late 1800s. With the launch of the roll top desk under our Jasper Desk brand, we acquired the first U.S. patent in the industry.

Years later, amidst the economic turbulence of 1929, seven local businessmen met with hopes of forming a seating company committed to producing long-lasting, quality wood chairs. Dedicated to causes that prospered their native city, these men worked tirelessly to lay the groundwork for a company culture centered around people. Thus, Jasper Seating Company was born out of a small family of employees alongside their first chair, the "400."

Still at home in the offering today, the "400" paved the way for more than those seven businessmen could have ever imagined. New product and market segments brought more opportunity, but with each endeavor, the company's values and passion for the furniture craft never wavered. To reflect this growth, a new brand, JSI, emerged from Jasper Seating Company.

Today, JSI is still as it was over a century ago. We are a family of employees that pride ourselves on supplying customers with the highest quality furniture, while maintaining and building close relationships. The sincere love that we have for our craft and the people with whom we work is reflected through the culture we have cultivated since 1929.

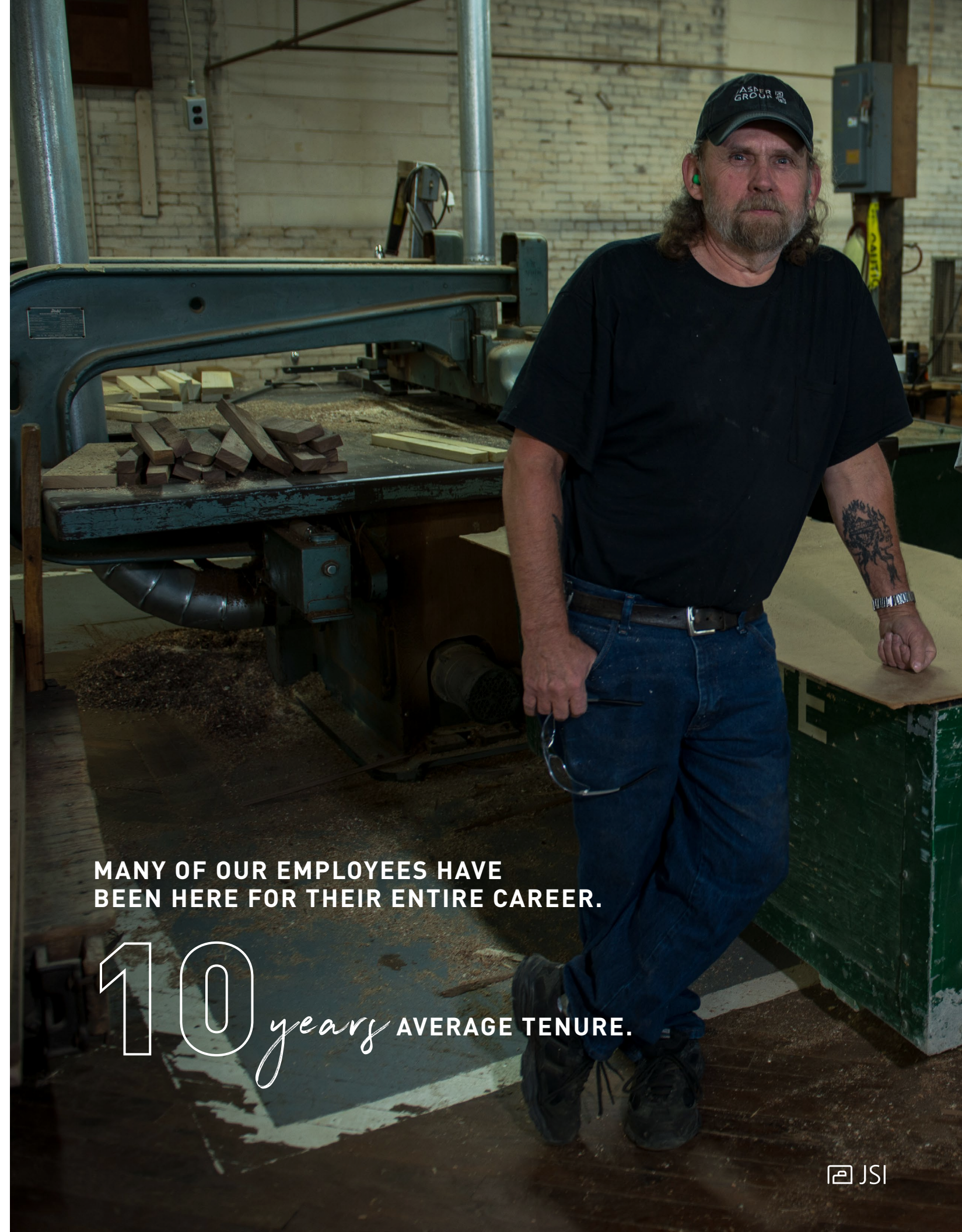
#lovewhatyoudo

PEOPLE + PRIDE



That's right, we said it, we're people of pride. To be exact, 837 people that take pride in what we design, innovate and produce while doing the right thing. We say what we're going to do and then we do it, each and every time. It's the way we care about our customers, co-workers, and our community.

At the heart of all of this is our people.



**MANY OF OUR EMPLOYEES HAVE
BEEN HERE FOR THEIR ENTIRE CAREER.**

10 *years* **AVERAGE TENURE.**

PEOPLE + PRIDE

DIVERSITY + EQUALITY

We're all unique in our own ways. We embrace those differences and believe that's what makes us a better team. We have core values that have been in place since the beginning. We celebrate the nuances that make us individually different and use those as a key advantage to be better together. We strive to promote this diversity and equality of all people. What this really means, is that we treat people the way we would want to be treated.

HEALTH + SAFETY

We are lucky enough to have organizations to ensure that safety standards are met across the industry. At JSI, we strive to go above those standards. Our people are our friends, family and community members, even one injury is one injury too much so we evaluate safety in our facilities every day.

Speaking of every day, wellness is an every day journey that is ever changing. We have incorporated wellness screenings into our benefit package that we encourage all employees to take advantage of.

TRAINING + EDUCATION

Each of us have different strengths and weaknesses. Education helps each of us strive to further ourselves not only professionally, but personally as well. JSI offers opportunities that include on the job training, continued education, and skill management for our co-workers.

CEUs

We believe knowledge can change the world. This is why we have created and teach 4 different CEUs to further share knowledge across the office furniture industry for Continuing Education Units. Our courses center around Indoor Air Quality, E3 (BIFMA), and specifying furniture. Our specifying class helps educate how specifying correctly can reduce errors and minimize waste which is a win-win for people, process, and planet. Our Director of Sustainability also works with BIFMA on 3 additional CEUs, all focused on sustainable manufacturing. All courses can earn participants Continuing Education Units.



PEOPLE + PURPOSE



100+ girl scouts

HAVE BEEN TRAINED ON THE
BENEFITS OF SOLAR POWER
AT OUR CORPORATE OFFICE.

We value the communities that we live and work in. Our co-workers are our friends, neighbors, and family members. We strive to find ways to lend a hand, whenever we can. We encourage everyone to give back in the ways that speak to them.

Our co-workers selflessly give their time and talent to make our world a better place. We have helped each other in times of natural disasters, economic uncertainty, and the surprises that life brings. Here are just a few of the organizations that our co-workers have contributed to: Adopt A Highway, Alzheimer's Association, American Lung Association, Best Buddies, Big Brothers, Big Sisters, Boy Scouts, Buffalo Trace Council, Community Chew, Crisis Connection, Disabled American Vets, Easter Seals, Foundation Fighting Blindness, Girl Scouts, Juvenile Diabetes Research Foundation, Kosair Charities, Muscular Dystrophy Association, Pallets for Patoka, Paralyzed Vets of America, Salvation Army, Special Olympics, St. Jude Children's Research Hospital, Ladies Auxiliary of the Veterans of Foreign Wars, and Younglife.

POWERFUL PRODUCTS



COMMITTED

Wood is the most diverse, process-friendly, and widely utilized natural resource that we have. We love the beauty of wood and have chosen to have most of our products crafted with this great resource. CNC technology helps us to find the best yield results for our products. From there we take it a step further and make sure that 100% of our wood is utilized. Leftover wood is used to burn in our boilers for energy savings and even our wood pallet lumber is shredded and utilized by our local turkey farmers for animal bedding. We push ourselves to continue to look for ways to innovate our processes in large and small areas.

TESTING

We recently opened our own testing facility to ensure our products will perform well for many years of use. The durability and safety of our products is of utmost importance to us.

1ST
WOOD FURNITURE MANUFACTURER
TO ACHIEVE THE
evergreen award.

POWERFUL PRODUCTS

WOOD

Wood, as our primary material, is an important piece of our creation process. We can rest easy knowing that wood is the most readily available, easily renewable resource with the benefit of being the only resource with a carbon negative footprint.

LAMINATES

Laminates are a great durable option to help keep cost low in a project. At JSI, our particle board is comprised of 90% recycled content. Any laminate material purchased through Wilsonart®, Pionite® or Formica® is GREENGUARD Certified.

FINISHES

We are continually looking for ways to improve our processes. JSI has created and is utilizing a new finish called Duratex that boasts low emissions which is designed to reduce off gassing. We recognize that the air we breath is just as important as the water we drink. Duratex answers the call with less off gassing while offering exceptional hardness, abrasion, and impact resistance.

FABRICS

Momentum®, CF Stinson®, Maharam® and Mayer® are just a few of the suppliers that we work with that offer textiles made of up to 100% recyclable materials and are 100% recyclable/compostable while being PVC-free.

We are your sustainable partner and are focused on helping you achieve your sustainable goals.



PRIMARY PARTNERSHIPS

We believe in doing our part and when you do the right thing it gets noticed. That is why, our sustainability director was asked to be on the Member of the ANSI/BIFMA E3 Committee. This committee is dedicated to creating and maintaining the forward thinking standards for the furniture industry. As a voting member, JSI has been involved in positively impacting the sustainability focus of the furniture industry.



Leadership in Energy and Energy Design (LEED) is the certification program that sets benchmark standards for the design construction and operation of the US Green Building Council. Our products can help you earn credits toward your LEED certification. Areas where our products may contribute to LEED credits are indoor air quality, material use, regional materials as our facilities are centrally located.



Building durable, structurally sound, and performance ready furniture is at the heart of what we do and have done since 1929. Additionally, we test to BIFMA standards and are ANSI/BIFMA E3 self-certified silver. At the end of the day you can rest assured that our products move at the speed of your business and will meet everyday demands.



As the third-party organization, GREENGUARD independently establishes the quality standards for indoor air quality. The air we breathe is essential to maintaining good health. We focus on innovation in the finishes and textiles we use to promote better air quality from the products we produce. We self certify that all products are certified UL 2818 GREENGUARD certified.

PASSIONATE FOR OUR PLANET

From the very beginning, we established for our company and co-workers, that we would make smart choices about our consumption of resources. It just makes sense from a cost savings standpoint, but more importantly we love our planet and want to keep it healthy for future generations. From low flow devices and energy efficient systems, we are very in-tuned with how we can make a difference.

All the little details that we focus on add up to a big impact. We choose to have all key suppliers come from the USA and all our manufacturing facilities are centrally located in the USA, within the wood cluster in the heart of the southern Indiana.

Wood is the most diverse, most widely used natural resource that has a carbon negative footprint, meaning that it removes more carbon from the atmosphere than it emits. We don't stop there, we focus our attention around conserving our resources. Whether that is using solar power or recycling ink cartridges, we are always looking for ways to do the right thing.

CO2 emissions reduced.

JSI was the first office manufacturer in Jasper to utilize solar energy. Because of our solar use and recycling practices, we have reduced our CO2 emissions by over 82 metric tons per month!

943 tons of solid wood excess is converted to energy.

This equates to 1.2M cubic feet of gas savings per month!

1,500,000 kWh saved annually by using efficient energy systems.



PASSIONATE FOR OUR PLANET

Reducing, reusing, and recycling is woven into the fabric of JSI. Even the nuts and bolts have at least 25% recycled steel. We look for these same attributes in our suppliers of which many utilize textiles that have up to 100% recycled content. We don't stop there, fabric remnants are stored for future use, sold to other companies to make wallets, purses and tablet covers or donated to local charities.

70% reduction in water waste.

Our boilers make use of condensation pumps, preventing excess water waste.

60% reduction of waste in landfills.

Our recycle/reuse efforts have lead to 60% less waste in landfills yearly.

100% recycled.

Packaging is up to 100% recycled content and 96% post consumer recycled content. All 55 gallon drum buckets in use at JSI are 100% recycled.



146 TONS OF CARDBOARD

105 TONS OF MIXED METAL

4 TONS OF OFFICE PAPER

.5 TONS OF PLASTIC

PACKAGING + TRANSPORT



We incorporate the same smart ideation into our packaging and transporting of our product as we do the creation of it. The corrugated packaging we use boasts up to 100% recycled content and 96% post consumer recycled content. We encourage the use of carriers that are SmartWay as they promote cleaner, more fuel efficient transportation options. We also implemented no idle zones to save on fuel and create less fumes into the air from transporting product.

PEOPLE + PRODUCT + PLANET *overview*

- Since 1929, love what you do while doing the right thing.
- Many of our employees have been here their entire career. Average tenure is 10 years.
- All manufacturing is done in the wood cluster of southern Indiana.
- Our Adopt A Highway volunteers keep 1.5 miles of highway clean.
- We trained 100+ Girls Scouts on the benefits of solar power.
- We believe in training. We offer 4 different CEU courses that are accredited.
- Seating/Casegoods go through testing at our internal testing facility.
- We are the only manufacturer with a certified Manufacturing Specialist on staff.
- First wood furniture manufacturer to achieve the Evergreen Award in Indiana.
- 100% of our wood is utilized.
- Excess wood that is burned in our boilers save JSI 14% of our energy use.
- Wood pallet lumber is shredded for animal bedding.
- First manufacturer in Jasper, Indiana to utilize solar power.
- JSI avoids over 82 metric tons of CO2 emissions by using solar power.
- 943 tons of solid wood excess is converted to energy leading to 1.2 million cubic feet of gas savings per month.
- 80% of JSI's newly purchased equipment was purchased gently used.
- Our 24 acre tract of wood is enrolled in the Indiana Classified Forest and Woodland Program.
- Boilers make use of condensation pumps that reduce waste water by 70%.
- We recycle/reuse which creates a 60% reduction of waste diverted from landfills.
- All 55 drum buckets are 100% recycled.
- Our packaging boast up to 100% recycled content and 96% post consumer recycled content.
- The little decisions add up and we are committed to doing our part.

For more information on JSI's sustainable practices, [visit our website](#).



Our commitment runs deep. Since 1929 we have been choosing to do the right thing, not only for you our customers, and co-workers, but also for the good of our planet. We promise that we are always looking, constantly striving, and passionately innovating our products and processes to help you love what you do while doing the right thing.