

K1 HEMISPHERE

STATIONARY

INDOOR / OUTDOOR USE

Securing the places people work, study, live and visit.

- ▶ Schools
- ▶ ATM Vestibules
- ▶ Casinos
- ▶ Commercial Properties
- ▶ Hospitals
- ▶ Multi-Family Communities
- ▶ Parking Lots and Structures
- ▶ Retail
- ▶ Rail & Public Transit
- ▶ Storage Facilities

UNIQUE BENEFITS

- ▶ Cost effective as low as \$545/month
- ▶ Affordably deploy multiple units per location
- ▶ Smallest footprint, yet still highly visible
- ▶ Person of Interest or BOLO alerts
- ▶ Crime reduction and/or elimination
- ▶ Real-time situational awareness
- ▶ Actionable intelligence
- ▶ Force multiplying physical deterrence

KEY FEATURES

- ▶ Up to 210° Eye-level HD Recording
- ▶ Call Button for Human Assistance
- ▶ Live Audio and Two-way Intercom
- ▶ Automated Broadcast Announcements
- ▶ Automatic License Plate Recognition
- ▶ People Detection up to 50 ft.
- ▶ Facial Recognition (no cost option)
- ▶ Strobe Light (650+ Lumens)



Don't have your own monitoring? Ask about Knightscope+

K1

HEMISPHERE

STATIONARY INDOOR / OUTDOOR USE



Weight: 30 lbs.

- (3) HD cameras with 2.58mm/F2.0 lenses, Color Night Vision™ (CNV) technology and long-range IR night vision.
- (1) Microphone
- (2) Speakers
- (1) Strobe light
- IP65 weather rating

○ **Intercom Button**
Directed to client-specified phone number

○ **Connectivity**
Ethernet, WiFi, or 4G LTE Cellular connection, with a minimum of 10mbps/5mbps download/upload speeds (25/25 or higher is recommended)

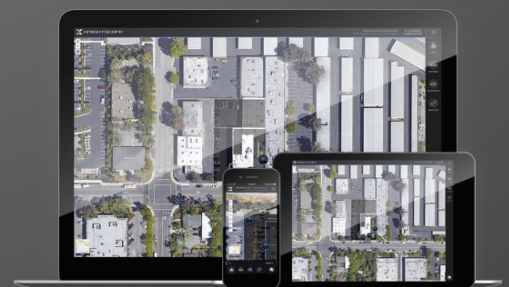
Electrical: 120v 10A outlet.

Orientation: Parallel to wall (0°), or up to ±15° angle to ground

Mounting: Concrete, brick, stucco, wood, metal plate, pole, or sheetrock (custom mounting options available for large volume orders)

USER INTERFACE

- ▶ Chrome browser interface; no software to install
- ▶ Live streaming to PC, Mac, tablet, cell phone
- ▶ 30-days raw video storage included
- ▶ Operating systems: MacOS, iOS, Android, Windows, Linux



See it in action at knightscope.com