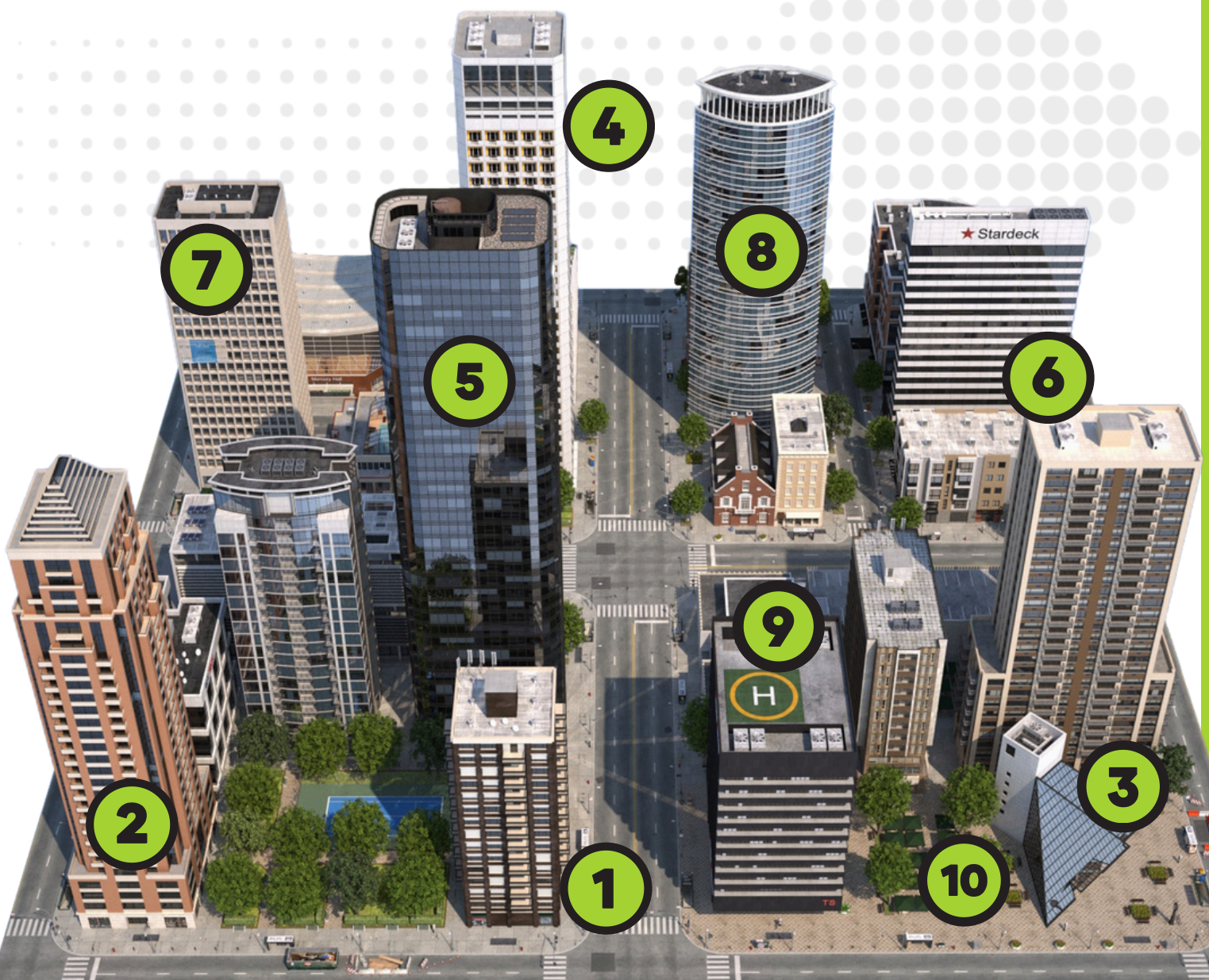


FIRM PROFILE



Lerch Bates



Headquarters

9780 S. Meridian Blvd.
Suite 450
Englewood, CO 80134

Major Markets

- North America
- Central America
- United Kingdom
- India

Office Locations

- Atlanta
- Boston
- Chicago
- Columbus
- Dallas
- Denver
- Houston
- Las Vegas
- Los Angeles
- London
- Mumbai
- Minneapolis
- Nashville
- New York City
- Philadelphia
- San Francisco
- Seattle
- Tampa
- Washington, D.C.

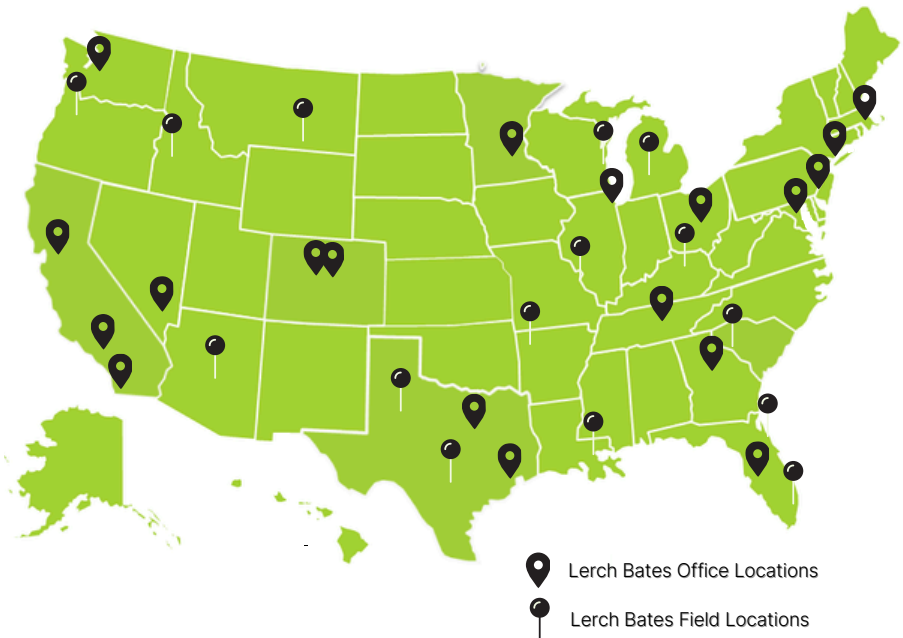
Important Info

- Tax ID: 36-2285171
- DUNS No: 08-7375556
- Banking Info:
UMB Bank, N.A.
Account No: 9872554604
Routing No: 101000695
- Payment Address:
PO Box 5742
Denver, CO 80217
- Accounts Receivable Contact:
accounts.receivable@lerchbates.com
- NY Union Affiliation Local #1
IUEC, Expiration 3/17/24
- EMR 2023: 1.0

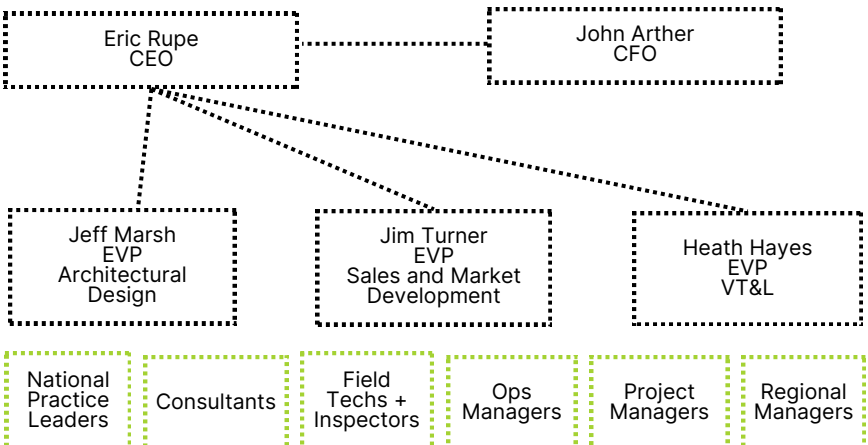
About LB

Founded in 1947 as the nation's first elevator consulting firm, Lerch Bates's technical knowledge and resume of project experience is unmatched. Our 75-year legacy as a trusted resource to our clients continues today as we provide innovative, sustainable solutions to the ever-evolving demands of the global Built Environment. With Lerch Bates Building Insight, you gain more than a technical consultant - you gain a global network of multidisciplinary experts who integrate seamlessly into your project team to provide whole-building optimization.

Expansive Network



Organization + Officers



Specialties

- Vertical Transportation
- Enclosures & Structures
- Facade Access
- Forensics
- Building Logistics

Lifecycle Services

- Design
- Construction
- Management
- Investigation
- Modernization & Repair

Service Areas

- Condition Assessments
- Maintenance Audits
- Structural Evaluations
- Forensic Failure and Damage Investigations
- Designer of Record Services
- Contractor Bid Solicitation & Tabulation
- Construction Administration
- Quality Assurance Observations
- Field Performance Testing
- Punch List & Project Close-Out Services

Sectors

- Aviation
- Commercial
- Corporate Office
- Cultural
- Education
- Government
- Healthcare
- High-Tech
- High-Elevation
- Hospitality
- Industrial
- Mixed-Use
- Residential
- Retail
- Sports & Entertainment
- Transit

Total Building Performance

Lerch Bates is the only consulting firm combining vast expertise in all things building science and building flow to deliver total building performance for your real estate asset. With one contact you can add an entire suite of technical experts to your team. Between our ownership mindset and our reputation as trusted technical advisors, we live up to our 75-year legacy as the go-to resource for the Built Environment.

Our consultants are equipped to provide technical expertise in five specialty areas at any stage of the building lifecycle, from new design/construction to maintenance, management or modernization.



- 1** Foundations & Below-Grade Waterproofing
- 2** Parking Garages
- 3** Windows, Storefronts and Curtainwall
- 4** Plaza Decks and Balconies
- 5** Exterior Claddings & Façade Systems
- 6** Roofs
- 7** Facade Access Equipment
- 8** Elevators, Escalators, Lifts
- 9** Building Logistics
- 10** Pedestrian Circulation

Staff Insights

- Total headcount: 400+
- Approximately 50% of FTEs are technical consultants
- Accreditations in all 50 states, including: P.E., LEED, QEI/CEI, EIT
- Globally distributed across 7 countries
- Fluent in 12+ languages
- 99% state they live the LB Core Values

Core Values

- Community
- Integrity
- Ownership
- Optimism
- Respect

ESOP Quick Facts

- ESOPs are 4x more resilient
- ESOPs are 25% more likely to stay in business in an economic downturn
- ESOP employee-owners receive 5-12% more total compensation
- ESOP employee-owners have 2.5x greater retirement savings
- LB distributed \$16M+ over 5 years to employee-owners
- The LB stock price has appreciated at double the rate of the DJIA in the last 15 years.

DEI Initiatives

- EEO Policy Statement
- Proactive recruitment efforts
- Employee Resource Groups
 - Belonging Committee
 - ESOP Committee
 - Women's+ Impact Network
- Popular Teams Channels
 - Pets
 - Fitness
 - Family
 - Travel

Culture

We pair deep technical knowledge with the core values that drive us. We operate in a culture of partnership, a commitment to responsive communication and a belief that we are all stronger when technical solutions are sustainable.

As employee-owners, we prioritize personal initiative, responsibility and accountability. We believe that powerful thoughts produce powerful results. As advisors invested in creating a bond of trust, we build our business with honesty and unbiased principles.

We value consideration and collaboration as the foundation of meaningful partnerships. We seek long-term relationships built on a foundation of trust. We are a group of employee-owners committed to our communities, delivering innovative solutions that create safe, sustainable and impactful Built Environments for all.

100% Employee-Owned

Lerch Bates is 100% employee owned via an employee stock ownership plan, or ESOP. That means your Lerch Bates team is made up of employee-owners personally invested in being responsive partners. We think proactively about what you need.



Expect responsibility, service and performance in everything we do.

ESG Commitment

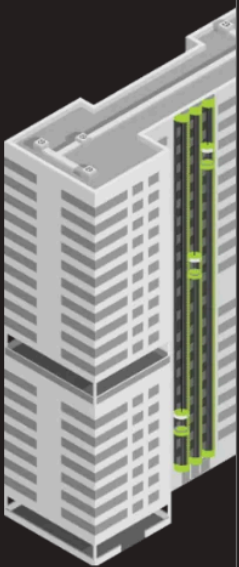
Based on science and driven by accountability, Lerch Bates's ESG committee, policies and processes exist solely to create positive impact and increase the resiliency and long-term prosperity of our employee-owners.

As a corporate steward, it is our duty to serve our clients with innovative technical solutions that will decrease environmental and carbon emissions impact while increasing Built Environment longevity and resiliency. Lerch Bates's technical expertise will lead our industry – from partners and clients to competitors – in their own pursuit of environmental stewardship. We will hold ourselves accountable to the people and places we impact through transparency, accountability, environmentally-sound science-based technical solutions and an ongoing commitment to listening, learning and improving our ESG policies and practices.

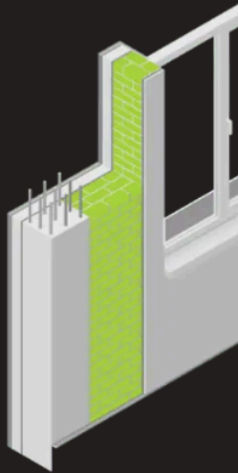
LET'S TALK

marketing@lerchbates.com
(877) 427-6470
www.lerchbates.com

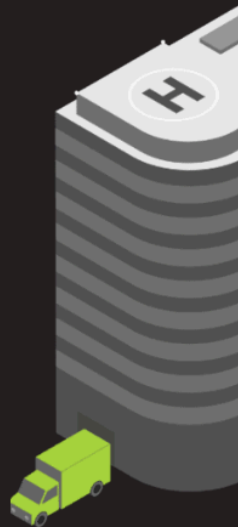
Vertical Transportation



Enclosures & Structures



Building Logistics



Forensics



Facade Access

