



MATRIX

GET MORE



CONTENTS

- 4** TOTAL SOLUTIONS PARTNER
- 6** FACILITY PLANNING
- 8** OPERATIONAL EXCELLENCE
- 10** CUSTOMIZATION
- 12** UNMATCHED CUSTOMER SUPPORT
- 14** MATRIX LEARNING CENTER
- 16** TOTAL MARKETING SUPPORT
- 18** INNOVATION
- 20** CHANNELS
- 22** MATRIX CONNECTED SOLUTIONS
- 24** CONSOLES
- 26** CARDIO OVERVIEW
- 30** STRENGTH OVERVIEW
- 36** GROUP TRAINING & CARDIO FLOOR SOLUTIONS
- 38** GLOBAL SHOWCASES
- 40** SUSTAINABILITY

GET MORE THAN THE WORLD'S FINEST FITNESS EQUIPMENT

When you choose Matrix, you're getting more than the world's finest fitness equipment. You're getting a partner that will be there, for your grand opening and every day after. Together, there's no detail of your business that we can't refine, reimagine or reinvent. And that includes your bottom line.

FACILITY PLANNING

Your space. Your goals. Your budget. We'll help bring your fitness center to life from your earliest ideas to the day you open your doors.

INDUSTRY-LEADING WARRANTIES

Our promise of quality to you. We offer all of the protection you need to choose confidently and know that you've chosen the products with the lowest cost of ownership in the industry.

DEDICATED SALES SUPPORT

Our internal teams will work with you to help you reach your unique goals. We'll help you choose the ideal mix of products for your needs and work with you to update and expand as your needs change.

POST-INSTALL PRODUCT TRAINING

We'll give your team a full demonstration on how to use your new equipment, plus introduce exclusive programs like Sprint 8®. At the end of training, your team will have everything they need to show members how to use your new equipment to its fullest potential.

FINANCING

We won't let monetary roadblocks get in the way of you providing a premium experience that meets the needs of the people you serve. Our dedicated staff will work with you to design a financing package that expands your options and maximizes your investments.

DISTRIBUTION NETWORK

Five distribution centers. Five ports of entry. 800,000 square feet of warehouse space. We have invested heavily in distribution and logistics resources to provide geographically close and immediate service to you.

CUSTOM BRANDING

Choose from frame and upholstery options that match your brand and showcase your logo in a variety of placement options. You can even count on us for next-level customization like branded console screens, premium embroidery, laser-cut steel and more.

UNMATCHED CUSTOMER SUPPORT

A 98% first-time fix rate. A 90% live answer rate in two minutes or less. A 48-hour service response window. More than 300 service providers with over 600 technicians to serve you. And with our amazing console technology, we can provide diagnostic services remotely or on site.

MATRIX LEARNING

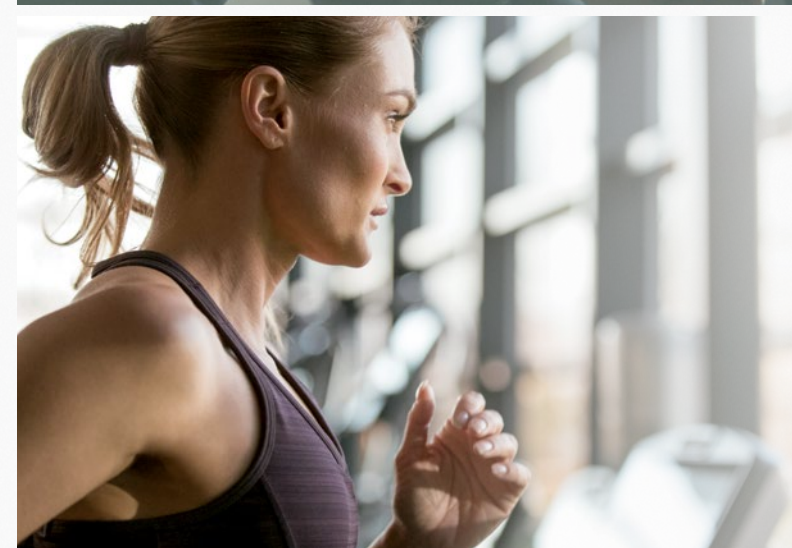
Product training. Maintenance tips. Career building. On-demand educational videos. A whole new world of service and support. It's all at your fingertips with Matrix Learning (matrixlearningcenter.com).

TOTAL MARKETING SUPPORT KIT

You want to let clients know about the exciting programs and products that make your facility different, and we want to help. Ask us about customized promotional materials to help you reach and retain clients like never before.

SUSTAINABILITY

We are committed to being a responsible global citizen when comes to not only our planet, but also our people and our practices. Everything Matrix is intentional: accessible employee wellness programs, reduced water consumption, strategic warehouse locations and more.



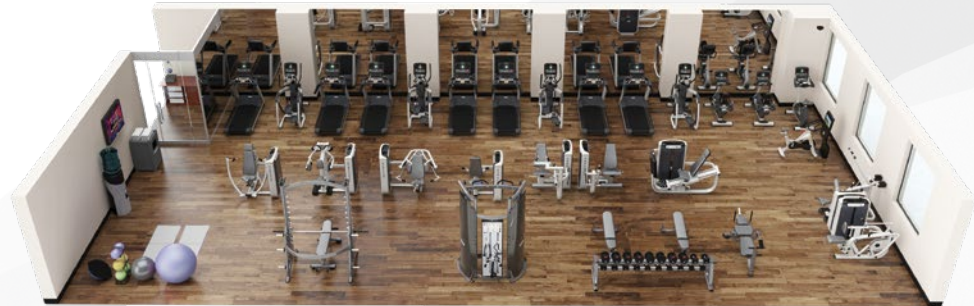
MORE THAN A DREAM

Whether you're developing concepts or creating final presentations, the Matrix Design Studio can bring your new facility to life. Our talented facility planning team will combine your ideas with cutting-edge 2D and 3D design resources to help you visualize the amazing possibilities, enhance visual appeal of marketing efforts and build community excitement for what's to come. We also offer an Online Architect Portal specifically for architects and club designers who have their own space planning software. Count on our ingenious design resources to help bring your dream to life without compromise.

2D LINE DRAWING



3D RENDERING



3D PHOTOGRAPHIC RENDERING





MORE THAN DELIVERY

Five distribution centers. Five ports of entry. 800,000 square feet of warehouse space. We have invested heavily in distribution and logistics resources to provide geographically close and immediate service to you. Matrix strives to achieve a 95% parts fulfillment goal of same-day shipping when received by 5 PM CST. Strategic partnerships with experienced installation, logistics and warehouse agencies grant us the ability to deliver our total solutions partner promise, no matter where you are.

MATRIX DISTRIBUTION & LOGISTICS

Matrix aims to be a partner who is there every step of the way. Our local presence allows us to be more efficient and responsive to customer needs, remedying issues quickly, and mitigating risk.

5 Distribution Centers

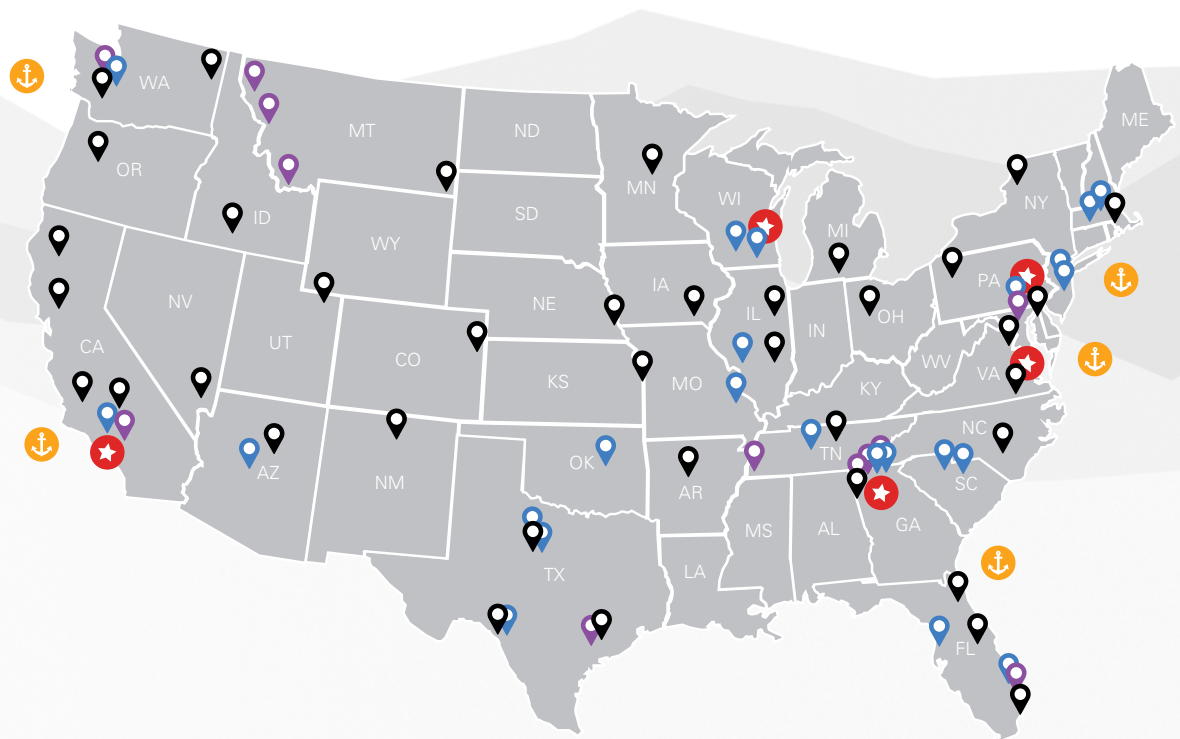
5 Ports of Entry

800,000 sq ft of space

95%

Parts Fulfillment Goal

Matrix strives to support all parts orders with a goal of same day shipping when received by 5pm CST.



We continue to expand our commercial distribution network, offering localized sales, logistics and service support.

Because of our numerous locations, we can deliver to anywhere in the United States within a

24-48
hour time frame.



Matrix Strategic Partners

- 27** Installation Partners (diversifying by region)
- 10** Logistic Partners
- 60** Warehouse Partners

- Distribution Centers
- Ports of Entry
- Warehouses
- Installation Partners
- Logistics Partners

MORE THAN COLORS

We have the custom branding capabilities to add accents on the fitness floor that inspire everyone who walks through your doors. Choose from frame and upholstery options that match your brand and showcase your logo in a variety of placement options. You can even count on us for next-level customization like premium embroidery, laser-cut steel and more. Contact us today to find out how we can infuse every inch of your fitness space with unique, motivational features.





MORE THAN A PROMISE

While our innovative Matrix product portfolio enables facilities to differentiate their offerings, it's how we respond to service needs after the sale that truly sets us apart. We prioritize prompt response times to deliver on a key core value – providing a world-class experience for our customers, every time.



Our technical support agents diagnose equipment issues at the first point of contact. These agents order the necessary parts and dispatch a service technician to complete the report. With more than 20,000 service parts in stock, we ship the necessary parts the same day the service issue is reported 95% of the time if ordered by 5 p.m. CST.



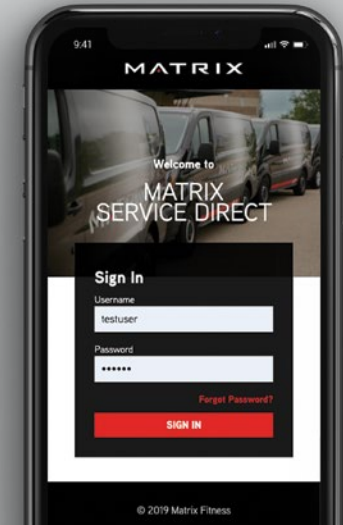
Our 30+ highly proficient on-staff Matrix Field Service Technicians travel with a fleet of vehicles stocked with the most commonly used parts in their regions. This team is combined with a national network of more than 300 independent service providers to get customer issues resolved within 48-72 hours of case creation. And with a host of resources, including a dedicated technical training staff and a robust online service portal, we are committed to fixing it right the first time at a rate of no less than 98%. A goal we consistently exceed.



Our team was awarded the International Service Excellence Award (ISEA) by the Customer Service Institute of America two years in a row, being the first fitness equipment manufacturer to win the honor.



We want to connect with our customers in the ways that work for them, so our service agents are reachable via toll free phone, our concierge call back service, email, text-to-chat, or the Matrix Service Direct app.



Matrix Service Direct app allows you to auto-populate service requests via voice command, scan serial numbers and upload pictures and videos to easily define the issue.

INTUITIVE

Facility staff can quickly and effectively enter service requests through a guided experience that expedites the diagnosis and response.

QUICK

The app lets you auto populate service requests via voice command and gives you the ability to scan serial numbers and upload pictures and videos to easily define the issue.

COMPLETE ACCESS

Access product information, repair history and track live repair status on all requests.

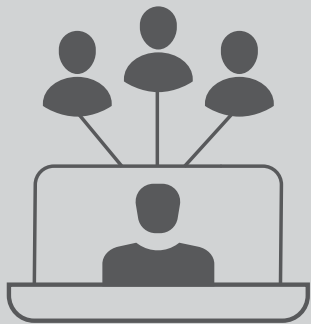
MORE THAN PRODUCT TRAINING

Whether fitness is your focus or just a part of your offering, Matrix Learning Center gives you unlimited access to an unmatched library of resources that will maximize your investment in everything Matrix. Owners and operators can count on us for tools and tips that increase ROI, enhance the member experience and reduce cost of ownership. Personal trainers and group exercise instructors can use our educational opportunities and expert-designed protocols to forge stronger relationships with clients and build loyalty that lasts. Even service technicians can turn to us for how-to videos and essential checklists that reduce downtime, streamline service and help you get it right the first time, every time.

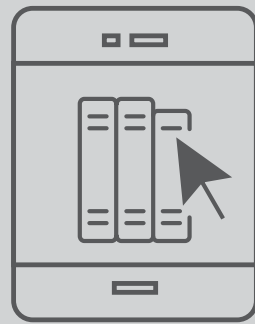
Discover more at matrixlearningcenter.com

MATRIX
LEARNING





EXPERT-LED WEBINARS



EXERCISE LIBRARIES



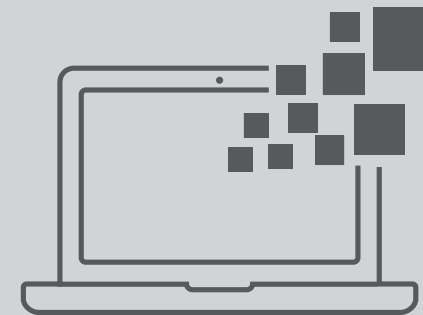
EDUCATIONAL PODCASTS



**EXPERT-DESIGNED
WORKOUTS**



MAINTENANCE TRAINING



TECHNOLOGY TIPS

MORE THAN WORD OF MOUTH

When it comes to reaching and retaining more clients, you need to let them know about all of the exciting programs and products that make your facility different. That's why we offer comprehensive outreach kits to help you promote your facility in ways that make a difference. Count on us for digital and printable posters, banners, digital assets, demo class invites, sample challenges and more to help you drive revenue and engage your members like never before.

Ask your Matrix representative for details.





MORE THAN INNOVATION

Innovation does not begin in a lab, at a factory or on a computer. At Matrix, the biggest and best ideas start with people. And not just any people. Matrix innovation begins with the most important people, our customers. We look to facility owners, personal trainers, service technicians and individual users to identify ways to improve our existing equipment and opportunities to introduce new solutions to fulfill unmet needs. We don't expect you to come up with the answers. That's our job. But we know what we need to do because we listen to your comments and your challenges, and then we experiment with solutions until we find the ones that work.

WE LISTEN

We believe the first step in innovation is not to act, but to listen. We listen to comments and suggestions about our products and our competitors' products. We ask questions, and we reflect on the answers to get to the crux of the issue. Ultimately, we take all kinds of feedback and translate it into product enhancements and prototypes.

WE EXPERIMENT

We can't be sure that we've found the best solution until we've ruled out the ones that fell short. Not every idea makes its way to a prototype. Not every prototype makes its way onto the floor. Only the best do. At Matrix, we know we'll try some things that just won't work. If we succeed every time, we're aiming too low.

WE SUCCEED

At the end of the process is an improvement or a new piece of equipment altogether. A ClimbMill that's easier to maintain and service. A new Ascent Trainer instead of another elliptical. A console that connects to social media. A bench press that eliminates the need for a spotter. An automated communication system that maximizes machine uptime and return on investment. The list can go on and on — and it will — because Matrix remains dedicated to bringing our customers new and better solutions to meet their needs.



MORE THAN ONE SOLUTION

No matter what kind of business you run, we have the tools and resources you need to drive growth and bolster profit. We'll work with your organization to make sure that you get a mix of equipment that is perfectly tailored to your unique needs. Partner with us, and we'll help you pick products that will elevate the exercise experience for your members and staff while making a real impact on your bottom line.

HEALTH CLUBS

Matrix is one of the most trusted and recognized brands in the industry, loved by club members, club owners, trainers and service people alike. We offer the industry's most robust product portfolio, plus exclusive integrated technology solutions that differentiate your facility to help you attract and retain members at a higher rate. Our forward-thinking designs redefine the exercise experience for all involved, making every interaction with our equipment smarter, easier and more enjoyable.

ATHLETIC PERFORMANCE

Universities, high schools and elite training facilities trust Matrix to provide the hardest-working equipment in the training room. Our thoughtful designs deliver dynamic performance, expanded functionality and the unmatched durability to stand up to the most intense training environments. No matter what your needs, goals or space requirements, Matrix has the tools to optimize your institution's investment and your athletes' efforts.

HOSPITALITY

Preferred by some of the world's finest hotels and resorts, Matrix makes it easy for exercise enthusiasts to find their favorite workout equipment while they're on the road. Count on Matrix to help your facility develop a fitness solution that reflects your brand, maximizes your resources and delights your guests.

ACTIVE AGING

Matrix believes in wellness at every age. That's why we offer the most extensive portfolio of functional movement solutions on the market to meet the needs of a full spectrum of individuals served by the fitness and health care industry.

MULTI-FAMILY HOUSING

Make your fitness center a highlight of your offering. You can count on our expertise to help you select equipment and technology that delights your community.

OTHER FACILITIES

You can find premium exercise equipment from Matrix virtually anywhere people are striving to achieve their fitness goals. We offer a wide range of choices to outfit corporate workout centers and promote employee wellness, as well as options ideal for country clubs, community centers and beyond. Wherever you find Matrix equipment, you can be sure that it will offer the same performance, functionality and durability that you'd find in the world's finest fitness centers.



MORE THAN FITNESS APPS

You want to deliver an unmatched fitness experience, and Matrix Connected Solutions gives you the flexible tools you need to do it your way, regardless of the size of your facility or budget.

With the power of our robust, open platform at your fingertips, service and maintenance become hassle-free. Your trainers can connect and engage with members in new ways for better results and more referrals. Everyone who comes through your doors can instantly connect to their favorite music, entertainment and social networks. It's easier than ever to expand your marketing efforts and make your brand the center of each member's fit lifestyle. And that's just a taste of what Matrix Connected Solutions can do. Discover how our complete selection of hardware and software solutions can help bring your vision of fitness to life in bigger, bolder, brighter ways than ever before.

ENGAGE 360

If you're striving to reach more members wherever they are and forge connections that last, our Engage 360 platform can make it happen in exciting new ways.

With Engage 360, your staff can access the ever-growing Matrix training library, create a training library all their own, assign workouts to individuals or groups, cheer on members, track member progress, manage calendars and monitor member engagement to make sure they keep coming back for more. Best of all, your facility gets to decide how you offer Engage 360, whether it's as an incentive to sign up, as a membership upgrade or as a virtual training option.

COMMUNITY 360

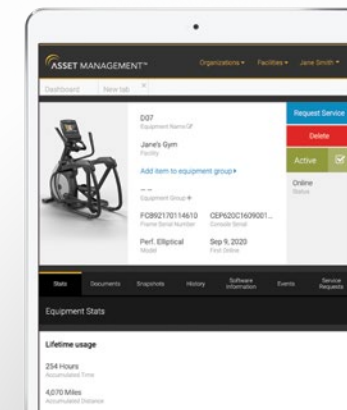
Now you can bring members together in a whole new way — and keep them coming back for more — with our Community 360 app.

Community 360 makes it easy to create a vibrant virtual fitness community that connects to members wherever they exercise with fresh daily workouts, community challenges, motivating push notifications, community activity feeds, class schedules, facility calendars, reward programs, referral incentives and more, all using your unique branding.

Community 360 works with all the most popular apps and wearables, but it won't just bring your members' fitness data together. It will bring your people together, creating connections and building loyalty that lasts.

ASSET MANAGEMENT™

Our comprehensive Asset Management system offers a 360° view of your equipment on virtually any internet-connected device. Quickly and easily check color-coded product information, access equipment-specific data, customize equipment names, understand usage patterns, manage multiple facilities, generate customized reports, set up automatic service notifications and much more. With Asset Management, you'll discover it's easier than ever to keep our equipment in top condition and your members happy.



 ASSET MANAGEMENT™

8 SPRINT 8[®]

Offer your members transformative results with a scientifically validated program that uses high-intensity interval training to strongly stimulate a natural growth hormone response, burning fat and building muscle in ways fad workouts can't. Sprint 8 is exclusively available on Matrix Touch and Premium LED Consoles.

VIRTUAL ACTIVE™

Our Virtual Active workouts transport exercise enthusiasts to exotic locales all over the world. The beautiful forward-motion, high-definition footage speeds up or slows down to match the user's pace, and resistance or incline varies to match the terrain. Virtual Active is available on Matrix Touch Consoles.

RFID

RFID is an easy way to streamline your members' exercise experience. Simple radio-frequency tags make check-in, program loading, workout tracking and even purchasing from RFID-compatible vending machines completely touch-free and virtually automatic.

Discover more at matrixconnectedsolutions.com



MORE THAN AN INTERFACE

Our diverse collection of consoles is compatible with Performance, Endurance and Lifestyle Series cardio equipment to give you choices in what you put on your floor, while helping your members make the most out of every precious moment of their workout time. Sophisticated, easy-to-operate designs give members control of the data they collect, the content that keeps them engaged and the way they reach their goals. You can also access our most powerful Connected Solutions with WiFi-enabled consoles, including Engage 360, Community 360 and Asset Management™. Explore our complete console collection at matrixfitness.com to differentiate your facility with a broad selection of intuitive consoles that are as easy to use as they are amazing.



TOUCH XL / TOUCH CONSOLES

Our Touch Consoles exceed expectations with brilliant displays and fluid app interfaces. Members can connect to entertainment, social, facility communications and more, all updated for free. Touch consoles connect to Apple Watch and include Sprint 8*, RFID login, a headphone jack, reading rack and WiFi to work with the Matrix Connected Solutions portfolio.

* Touch XL only available on treadmills and ClimbMills.



PREMIUM LED CONSOLE

Our Premium LED Console combines an icon-based interface with a colorful, pixel-rich display for engaging workouts. Includes Sprint 8, optional RFID login, headphone jack, reading rack and WiFi to work with the Matrix Connected Solutions portfolio.



LED CONSOLE

Our LED Console keeps exercise simple with an uncomplicated interface and a large number display and message center for complete workout feedback. Includes reading rack for personal devices, headphone jack and optional WiFi to work with the Matrix Connected Solutions portfolio.



GROUP TRAINING LED CONSOLE

Our Group Training LED Console includes one-touch controls for speed, incline or resistance, plus preset intensity levels to keep a range of participants in sync with instructor cues. WiFi is optional to work with the Matrix Connected Solutions portfolio.



MORE THAN ONE-SIZE-FITS-ALL

Whether fitness is your business or just a part of what you do, your choices make all the difference. That's why we've reimagined our offering, making it easier to choose the solutions right for your budget, your space and the people you serve. Each of our three cardio series are compatible with one of five refined consoles for exciting combinations of performance and technology. When it comes to achieving your goals, it's easy to choose Matrix — and know you've chosen wisely.

PERFORMANCE SERIES /

For fitness facilities that demand the best, our Performance Series provides an unmatched portfolio of premium cardio equipment. A refined aesthetic sets your facility apart in a way that attracts exercise enthusiasts of all kinds and keeps them coming back for more. Our precision-engineered designs and rugged components are tested against the highest international standards, ready for the most intense workouts. Ergonomically refined touchpoints like seats, handlebars, sealed buttons and smart workout controls make even long, hard workouts comfortable, convenient and intuitive. A range of advanced features simplify and reduce service needs to minimize downtime and maximize member satisfaction.

ENDURANCE SERIES /

The Endurance Series offers design and flexibility that makes it easy for your fitness facility to maximize its resources with every decision. Streamlined designs simplify the exercise experience while still providing premium performance that can challenge most cardio enthusiasts. When it comes to durability, everything from the Endurance Series is designed and tested to stand up to tough environments and heavy use for years. Best of all, our Endurance Series can meet you where you need to be when it comes to features, functions and your budget.

LIFESTYLE SERIES /

If fitness is a small but important part of your offering, Matrix has cardio equipment that fits your space, your budget and your brand. Choose our Lifestyle Series equipment for value-conscious design, reliable performance and a unified aesthetic that welcomes all the different people you serve. Simplified operation makes it easy for anyone to start a workout, even users who are unfamiliar with exercise equipment.



MORE THAN A HEART-PUMPING WORKOUT

Cardio training is the cornerstone of any sound fitness routine, but today's exercise enthusiasts expect a lot more than a good, hard run. We offer industry-leading options that help them work out the way they want to — whether that's running, rowing, riding or climbing — then enhance those basics with integrated technology solutions that completely redefine the exercise experience. From exclusive training programs to connected workout tracking to premium entertainment and beyond, there's no limit to the ways we can help you motivate your members to keep going and mentor them to reach their goals in exciting new ways.

UNIQUE CARDIO OPTIONS

Add group training solutions to your cardio floor to give members the variety they crave. Exclusive products like the S-Drive™ and S-Force™ Performance Trainer, and Rower can differentiate your offering in a way that attracts and retains more true exercise enthusiasts. See our Group Training section on page 30 for on these unique products.

TREADMILLS

Striking the perfect balance between engineering and aesthetics, our treadmills attract more attention and require less maintenance than anything you put next to them. The exclusive features of our Lifestyle, Endurance and Performance Series provide the smoothest, most consistent performance on the market, while our Performance Plus Treadmill delivers an unforgettable running experience for your members and an exceptional ownership experience for your facility.

ASCENTS & ELLIPTICALS

We listened. We watched. We designed. And we developed equipment that provides smooth, stable, natural movement that makes every workout comfortable and efficient. Our Ascent Trainer® offers a compact footprint that helps you make efficient use of your cardio floor, and our ellipticals are unmatched when it comes to delivering a synchronized, natural exercise experience.

CYCLES

Performance, comfort and styling make our cycles a favorite for members, while easy use and streamlined maintenance make them a top choice for owners, trainers and service techs. And with self-powered options, you can place them anywhere in your facility. Choose a mix of the industry's best upright, recumbent and hybrid designs to give every member the ride of their life.

CLIMBMILLS

Give your members the most authentic stair-climbing workout on the market with a combination of high-design, low-maintenance machines. Our Control Zone and Step Positioning Software help users work out smoothly and securely, our exclusive Sweat Management System protects critical components to extend the life of your equipment, and Ergo Form™ Grips put seamless workout adjustments at your members' fingertips. Groundbreaking design and breathtaking performance combine for a treadmill that feels, functions and lasts unlike any other.

VIRTUAL TRAINING CYCLE

Finally, all the different people you serve can ride the way they want to with the Matrix Virtual Training Cycle. They can take on exclusive programming, stream music, movies and shows, and access instructor cycling classes- all on a cycle precision engineered for intensity.



MORE THAN WEIGHTS & PLATES

All of our strength series offer something unique, and finding the right combination for your fitness facility can help you earn and retain members more effectively than ever before. Choose from series that offer high-performance designs, extensive options, premium styling, unmatched durability and much more, mixing and matching until your singular vision of fitness becomes a reality.

ULTRA SERIES /

Powerful yet comfortable. Advanced functionality with intuitive operation. The industry's most durable components wrapped in breathtaking industrial design. Ultra Series goes beyond your expectations of strength training equipment to delight lifting enthusiasts of all ability levels.

VERSA SERIES /

Our most versatile series gives you the options to build a strength training area that fits your space and the needs of your members in a beautifully precise way. Versa Series incorporates advanced biomechanics for a natural, smooth, efficient workout experience.

AURA SERIES /

Superior styling made the Aura Series an instant classic. Signature features made it one of the most-imitated product lines in the industry. Choose the Aura Series, and you'll discover that beginners and fitness enthusiasts alike will be drawn to something that the competition can't imitate — an unmistakable aura of greatness.

GO SERIES /

Now you can engage users new to strength training and circuit programs with our easy-to-use, space-efficient Go Series. Minimal adjustments, low starting weights, and smaller progressions create a welcoming experience where anyone can sit and go, while compact footprints, back-to-back designs, and low stack heights fit your space and budget.






MAGNUM SERIES /

Born from a long tradition of premium performance, there's no better choice for professional athletes than the unrivaled performance and durability of Magnum Series. Advanced options like Breaker Benches and MEGA Racks help athletes reach their potential, and the impeccable designs stand up to the most demanding environments.

VARSIITY SERIES /

For a blend of performance and value, look no further than the Varsity Series. It offers the dynamic performance and superior ergonomics that the fitness world has come to expect from Matrix, plus the uncompromising durability you need to accommodate a steady stream of users.





MORE THAN ONE WAY TO BUILD STRENGTH

When it comes to building strength and refining major muscle groups, everyone is different. We offer a complete collection of designs to meet the needs of not just your people, but of your space, too. Appeal to serious strength training enthusiasts with racks and platforms. Choose plate-loaded designs to help members push their limits. Give members an intuitive experience with single-station units, or make the most of your space with multi-station units. And don't forget the free weights, a popular option for beginners and enthusiasts alike. Whatever combination you choose, we'll make sure you have everything you need to make your strength training area all you imagined and more.

SINGLE-STATION

Our amazing selection of single-station machines are nothing short of ideal for members ready to focus on refining specific muscle groups. Each and every variety we offer makes it easy for members to quickly select their weight and exercise safely in a self-contained unit. Operation is intuitive, and our high-performance designs ensure that your members are getting the most out of every set, every rep and every moment they spend pursuing their fitness goals.

MULTI-STATION

Multi-station units help you make the most of your floor space and help your members make the most of their workout time. Smart designs let users take on multiple exercises in a small space, making quick adjustments to maximize impact and results. To attract even more exercise enthusiasts to your facility, add ultra-versatile functional trainers that provide an unparalleled workout in an efficiently enclosed space.

FREE WEIGHTS

No facility is complete without a selection of premium free weights, the time-tested backbone of the strength training experience. Choose from our unique strength series to find the combination of iron and ergonomics just right for your facility. Exclusive features like patented breaker benches and high-style industrial design will prove a draw for aspiring fitness enthusiasts and seasoned lifters alike.

PLATE-LOADED

Plate-loaded units are nothing short of essential when it comes to helping your members exercise major muscle groups and push their strength training limits. Thoughtful design and incredible attention to detail make our ever-popular stations easier to load, unload and access, so members can get the workout they need, where they need it, and keep on going.

RACKS & PLATFORMS

When serious strength training enthusiasts see our premium racks on your floor, they'll know they're in the right place and keep coming back for more. Everything we offer features heavy-duty construction that stands up to the most rigorous use, plus stylish industrial design that draws the eye and dares the user to go for a new personal best.

OPTIONS & COMPONENTS

Set your facility apart with small additions that enhance the strength training experience in big ways. Our thoughtfully designed optional components can make traditional exercises more comfortable, more efficient and more versatile. Soon your members will find that they can't imagine strength training without them.

ULTRA SERIES WITH INTELLIGENT TRAINING CONSOLE

When you choose Ultra Series with Intelligent Training Console, you'll get a digitally connected, guided experience that will allow members to define their physical transformation target and receive step-by-step equipment instruction.



MORE THAN BOOT CAMP BASICS

Group training is on the rise because nothing else provides the kind of motivation, camaraderie and accountability members need to try new things, persevere through tough sessions and keep coming back for more. We can differentiate your fitness facility's offering to help you attract new members and retain them in a way only engaging group training can.



CONNEXUS™ FUNCTIONAL TRAINING SYSTEM

Ideal for classes where users perform weight-bearing exercises that reflect their daily activities, Connexus gives club owners and trainers maximum flexibility, virtually unlimited expandability and the ability to offer immediate feedback to help refine user form.



S-FORCE™ PERFORMANCE TRAINER

When the margin between victory and defeat is razor-thin, every split-second matters. That's why we specifically designed the S-Force Performance Trainer to build fast-twitch muscle fiber essential to speed and power. Resistance increases the harder the athlete works, so even elite athletes are challenged in a way that develops more.



ROWERS

Take advantage of the growing popularity of rowing in group formats by bringing our sleek, thoughtfully designed rowers to your circuit. Offer a classic experience with our standard rower or reinvigorate rowing and make your facility stand out with the RXP Target Training Rower.



TRAINING CYCLES

Attract more riders and make your group cycling classes a core part of their training regimen. All of our durable Training Cycles feature optimized ergonomics and intuitive adjustments that make it hassle-free for every member to experience the feel of a real outdoor ride. Step up to the CXM Training Cycle to take metric tracking to the next level, or completely redefine the cycling experience with the goal-based training of the CXP Target Training Cycle.



S-DRIVE™ PERFORMANCE TRAINERS

Bring our S-Drive Performance Trainers to your fitness center to offer members an incredibly versatile high-intensity interval training (HIIT) solution. Introduce S-Drive Metrics to elevate metric tracking or, for individualized goal-setting and real-time feedback, take on the S-Drive Power with Target Training display.



MX4

MX4™ TRAINING SYSTEM

If you're looking to drive revenue and differentiate your group training offering in a way that attracts, engages and retains members, then you need to bring the MX4 Training System to your facility. Only MX4 combines Matrix-exclusive equipment and original turnkey programming to create a signature group exercise experience that members will invest in and commit to more frequently.

MX4 ACTIVE

MX4 ACTIVE

MX4 Active can help your facility engage older and deconditioned adults in a way right for their abilities and keep them coming back for more. Using scientifically validated principles, MX4 Active incorporates low-impact, lower-back friendly exercises, familiar repetitions and natural progressions for a confidence-inspiring experience that improves overall fitness.

MATRIX RIDE

MATRIX RIDE

Matrix Ride makes it easy for trainers to lead a next-level cycling class that engages a wider range of members. Our exclusive programming blends the energy of classic group cycling with precision performance training, integrating metrics for compelling classes that deliver measurable results.

MORE THAN A REPUTATION

Matrix is proud to have our equipment prominently featured in some of the finest fitness centers around the world. This is only a small selection of the fine establishments we partner with, a list that grows every day. Our global distribution network positions us to serve clients in dense urban areas, on remote island getaways and everywhere in between.

Find more impressive showcases from around the globe at matrixfitness.com.



**MAX FITNESS WARNER ROBINS
WARNER ROBINS, GEORGIA, USA**

Warner Robins' largest health club facility! This 40,000 sq ft facility is complete with all the latest amenities including a 3 lane indoor pool.



**FLORIDA GULF COAST UNIVERSITY
FORT MYERS, FLORIDA, USA**

The 48,000 square foot University Recreation and Wellness Center includes a fitness floor, cardio deck and more to provide a hub for student involvement and engaging recreational experiences.



**445 WEST 35TH STREET
NEW YORK, NEW YORK, USA**

445 provides a coveted place to call home with amenities ranging from a fully-attended lobby to a fitness studio complete with a weight and cardio area.



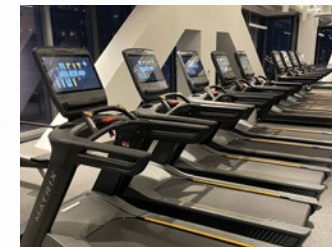
**THE PHOENICIAN
SCOTTSDALE, ARIZONA, USA**

As Arizona's premier luxury resort destination, the Phoenician offers five-star suites, elegant dining options, a newly redesigned golf course, a state-of-the-art fitness center and much more.



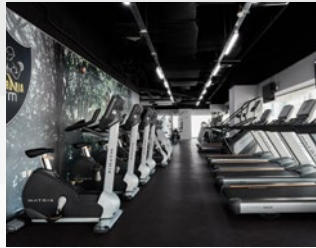
**BALTIMORE RAVENS U.A. CENTER
BALTIMORE, MARYLAND, USA**

Players lift four out of seven days a week in the Ravens training facility featuring a line of weightlifting machines organized by body part, free weights and a cardio section.



**110 NORTH WACKER
CHICAGO, ILLINOIS, USA**

A Class A+ office tower with 55 occupied floors and approx. 1,530,000 rentable square feet, 110 North Wacker features robust amenities such as a premium corporate wellness center for tenants to enjoy.



**CALIFORNIA GYM
ABU DHABI, UNITED ARAB EMIRATES**

Dedicated to creating a high-end experience for its members and guests, California Gym provides premium services and fitness offerings to Abu Dhabi's most demanding clients.



**PRIMA PEARL
MELBOURNE, AUSTRALIA**

These iconic luxury apartments thrill residents with premium amenities, elite location, 300 customized domiciles and Australia's fastest lifts.



**WELNESSELANDE
BARENDRICHT, NETHERLANDS**

Spacious and well-polished, this premium Dutch fitness center serves the needs of all fitness enthusiasts with first-class equipment and superior amenities.



**BASIC-FIT HAREN
BRUSSELS, BELGIUM**

A market leader with over 650 clubs, Basic-Fit pairs high-quality fitness equipment with a flexible membership model to make fitness more accessible to all.



**DESERT HIGHLANDS GOLF CLUB
SCOTTSDALE, ARIZONA, USA**

Desert Highlands, a private club community nestled next to the majestic Pinnacle Peak, prides itself on promoting an environment enriched in living well using a 7,700 square foot fitness haven.



**UNIVERSITY OF VICTORIA,
BRITISH COLUMBIA**

A public research university boasting a picturesque 403-acre campus, the University of Victoria consistently ranks in the top one percent of universities around the world.



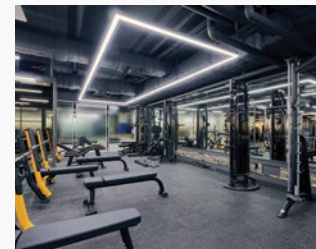
**IN-BALANCE
ROELOFARENDSVEEN, NETHERLANDS**

This elite Dutch health club offers ultra-modern architecture, premium amenities and a superior selection of dynamic exercise equipment to help fitness enthusiasts reach their unique goals.



**SNAP FITNESS
SURFERS PARADISE, AUSTRALIA**

Open 24 hours a day and seven days a week, Snap Fitness features world-class facilities and qualified personal trainers to keep members motivated as they strive for their fitness goals.



**SPOWELL GYM MUNJEONG,
SEOUL, KOREA**

A top fitness chain in Korea, Spowell Gym offers members premium fitness solutions in an inviting, modern and industrial environment.



**SPRING-FORD SENIOR HIGH SCHOOL
ROYERSFORD, PENNSYLVANIA, USA**

The strategically placed, suburban school district upgraded their existing physical education center by building a remarkable 17,200 sq ft addition, equipped with all-new training tools.

MAXIMIZED RECYCLING

In recent years, we have recycled approximately 72% of waste materials, eliminating more than 790 tons of waste from landfills.

REDUCED WATER USE
FROM 5.8M GAL TO
4.9M GAL
ANNUALLY



RESPONSIBLY SOURCED & PROCESSED

We own our factories and control manufacturing from raw materials to finished products, so we can make sure that all of our materials are responsibly sourced and processed in environmentally preferable ways.



A TRULY GLOBAL COMPANY



AUSTRALIA / NEW ZEALAND

Johnson Health Tech Australia Pty. Ltd.

BRAZIL

Johnson Health Tech Brasil

CANADA

Johnson Health Tech Canada

CHINA

Johnson Health Tech (Shanghai) Co., Ltd.

CZECH REPUBLIC / SLOVAKIA

Johnson Health Tech CZ & SK a.s.

DENMARK

Johnson Health Tech Denmark ApS

FRANCE

Johnson Health Tech France

GERMANY / AUSTRIA

Johnson Health Tech GmbH

GREECE / BULGARIA / CYPRUS

Johnson Health Tech Hellas SA

HONG KONG

Johnson Health Tech Hong Kong

ITALY

Johnson Health Tech Italia Spa

INDONESIA

Johnson Health Tech Indonesia

JAPAN

Johnson Health Tech Japan

KOREA

Johnson Health Tech Co., Ltd. Korea

MALAYSIA

Johnson Fitness (Malaysia) SDN. BHD.

MEXICO

Johnson Health Tech Mexico

NETHERLANDS / BELGIUM / LUXEMBOURG

Matrix Fitness Benelux

PHILIPPINES

Johnson Health Tech Philippines Inc.

POLAND

Johnson Health Tech Sp. Z. O. O.

ROMANIA

Johnson Health Tech Romania

RUSSIA

Johnson Health Tech Russia

SPAIN / PORTUGAL

Johnson Health Tech Ibérica SL

SOUTH AFRICA

Johnson Health Tech South Africa (PTY) Ltd.

SWITZERLAND

Johnson Health Tech (Schweiz) GmbH

TAIWAN

Johnson Health Tech Taiwan

THAILAND / CAMBODIA / LAOS / MYANMAR

Johnson Health Tech (Thailand) Co., Ltd.

TURKEY

Johnson Health Tech Turkey

UNITED ARAB EMIRATES / JORDAN / KUWAIT / OMAN / QATAR / SAUDI ARABIA

Johnson Health Tech Middle East

UNITED KINGDOM

Johnson Health Tech UK Ltd.

UNITED STATES

Johnson Health Tech North America

VIETNAM

Johnson Health Tech (Vietnam) Co. Ltd.

Visit matrixfitness.com for full contact information.

MATRIX



ABOUT MATRIX FITNESS

In 2001, Johnson Health Tech established Matrix Fitness to bring premium fitness equipment to the marketplace. Since then, we've become the fastest-growing commercial fitness equipment brand in the world. Matrix has leveraged continuous innovation and cross-cultural collaboration to emerge as an industry vanguard, constantly challenging standards and raising expectations for fitness equipment design and exercise technology.




Our product portfolio has expanded to over 500 products including strength equipment, cardio platforms, group exercise modalities, athletic performance training tools, fitness technology, integrated HIIT workouts, turnkey programming and much more. With 30 subsidiaries around the world, Matrix is uniquely equipped to meet fitness and wellness needs in every corner of the globe.

Today, Matrix Fitness is dedicated to serving fitness facilities of all kinds, setting them apart in ways that attract and retain more members. Our mission is to delight and excite our customers through complete solutions and committed partnership provided by a world-class organization.

MATRIX
Strong • Smart • Beautiful

Matrix Fitness

1600 Landmark Drive
Cottage Grove, WI 53527 USA

   matrixfitnessusa
matrixfitness.com | 866.693.4863

©2022 Matrix Fitness. All Rights Reserved

AUTHORIZED MATRIX FITNESS DISTRIBUTOR