



COLORPLAY

 **PLAYCRAFT**
SYSTEMS

A PLAYCORE Company

THE IMPORTANCE OF COLOR

Color is an element of visual language that people process before they are consciously aware of it. Color draws attention, sets the tone of the message, and guides the eye where it needs to go. It presents a sense of priority and direction that people can identify and relate to. Because color is such a potent element of visual communication, we need to take into consideration how we use it and the affect it has on the viewer.

We know how easy it is to simply pick your favorite colors and move forward with your playground design. But, we're here to explore a few methods and considerations that we think deserve your attention if you want to create expertly designed playgrounds.



1

METHOD

Coloring by OBJECTIVE

Coloring by Objective

Coloring by predetermined objectives is a smart way of choosing colors for a playground. A color palette can be coordinated with the surrounding environment, a theme, or a client's established brand identity.

As an Example...

A city is planning an inclusive playground in a heavily wooded park with established landscaping in an upscale residential area. This playground needs to be warm and inviting while highlighting the inclusive equipment and ramps. The playground surfacing will be blue rubber tiles to coordinate with their city colors.

Coloring Plan

- Highlight the inclusive ramps with our Driftwood Tan Play-Tuff coating to contrast against blue surfacing.
- Create a conservative color palette by keeping colors Analogous (closely related).
- We can use warm hues to create an inviting motif.
- Complement landscaping and surfacing colors with reds & oranges to create harmony and stand out.

Analogous Colors



SYSTEM TYPE COMPARISON

Round-5 System

This system type is the easiest to get a good color balance between materials. Those with the most visual dominance are powder-coated posts and barriers, Play-Tuff decks, and plastic elements. It's easy to create a harmonious palette when you give each of these main materials a different color. However, if one color needs to stand out to fit project objectives, consider applying it to more than one material.



Color Palette
Balance

Round-3.5 System

In this system type, HDPE plastic is used for access, half walls, and most barriers, so visually there is more plastic and should get prioritization. Choosing a color palette with one prominent color applied to the plastic creates a strong effect. In this example, the system is heavily weighted Red, while the other colors soften and harmonize with warm hues.



Color Palette
Balance

Revolution System

The brushed aluminum post color and striking verticals dominate this system type, and must be accounted for. By limiting yourself to two major colors (other than the cool gray of the posts), you can achieve a harmonious color palette. Here we've kept to our established color palette by using Snowcap White post caps, Autumn Yellow steel, and mostly Rhubarb Red plastic.



Color Palette
Balance



2

METHOD

Coloring by
PALETTE

Coloring by Palette

Coloring by a pre-selected color palette is a common way of choosing colors for a playground. School colors are often represented in their choice of playground colors. The challenge is filling out a palette using the chosen colors in a harmonious way, and within the materials available.

As an Example...

A private education academy is purchasing a new play structure. The playground is in an open area behind the school. To embrace long standing traditions and promote school spirit, they want to use their school colors of blue and gold. There is existing blue equipment on the site, and new artificial turf surfacing.

Coloring Plan

- Fill out the palette with variations of the blue and gold school colors. Gold can be suggested by mixing yellows and oranges in a balanced way.
- Choose color pairings for high contrast “pop”.
- A balanced color application to match their logo.
- Coordinate and contrast structure colors with artificial turf and existing equipment.

Complimentary Colors



SYSTEM TYPE COMPARISON

Round-5 System

When a roof is not present, the shift in color balance can be dramatic. The visual weight is shifted lower, and powder-coat colors run the show. Horizon Blue was chosen to be used on steel barriers and events to soften the transition between the Pacific Blue and the Autumn Yellow. Gull Gray decks moderate the bright playful accents of the Sunshine Yellow collars.



Color Palette
Balance

Round-3.5 System

Applying the same color palette to a R-3.5 system has a different effect. Pacific Blue plastic events command attention against Gull Gray decks. The smaller diameter R-3.5 posts give a golden, glittery effect when accented with Sunshine Yellow collars. The Horizon Blue powder-coated steel gives a nice variation to the prominent deep blue of this system.



Color Palette
Balance

Revolution System

A color palette that works well for the R-5 and R-3.5 system types does not always work on Revolution systems. In this example, Blue and Yellow have a more dominant effect while the warmer Autumn Yellow is used merely as an accent on Post caps. Horizon Blue is used on all powder-coat steel to visually connect the system together while yellow and blue are evenly applied to plastic elements.



Color Palette
Balance



3

METHOD

Coloring by
LAYOUT

Coloring by Layout

Coloring by the system layout and visual weight of the actual equipment is perhaps the most open and artistic way of choosing colors for a playground. Using basic color theory, a color palette can be developed that works well with the play equipment while taking its form and function into consideration.

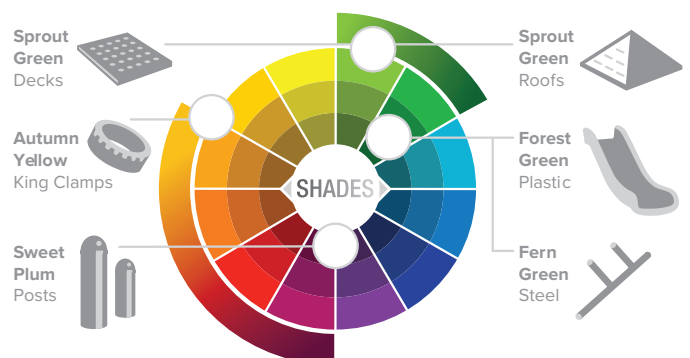
As an Example...

A suburban park is interested in a large hybrid system playground with an expansive design and several freestanding elements. All components need to be color coordinated in a vibrant color palette. The equipment is to be strategically placed across a large area that will be covered in wood chips.

Coloring Plan

- Plastic and steel heavy design suggests a palette based off light and dark, high contrast hues.
- Using Sweet Plum on posts with Autumn Yellow King-clamps will create vibrant, energetic accents.
- Since the equipment is spread out, we'll use Sprout Green decks and roofs to create a strong visual link.
- We repeat the color palette on freestanding elements to harmoniously connect to the structure.

Split-Complimentary Colors



SYSTEM TYPE COMPARISON

Round-5 System

In a system design that is spread out, play events become visual islands onto themselves. A trick to giving a cohesive feel to the system as a whole is to use a single dark color on all powder-coated steel barriers and walls. Here we've used Fern green. Repetition of color can also perceptually connect separate visual elements, such as the Sprout Green decks and powder-coat steel roofs.



Color Palette
Balance

Round-3.5 System

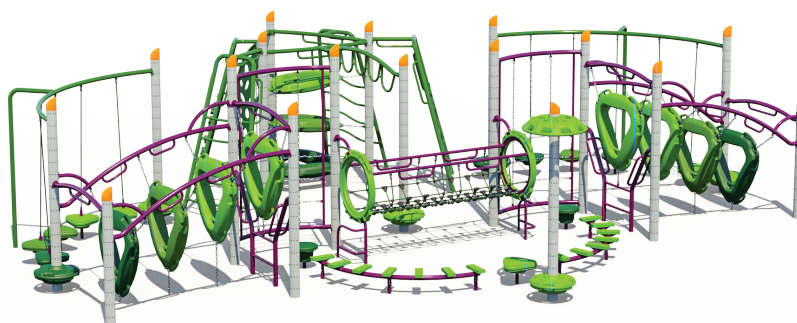
The larger amount of plastic used in R-3.5 system construction can cause a concentration of one color, especially in systems that use steel or rope-heavy events in one area and plastic in another. In this example, we've balanced this effect by using complementary colors of Sweet Plum posts and Autumn Yellow collars. Their visual contrast ties the system together and adds warmth to the green.



Color Palette
Balance

Revolution System

Sprawling and physically active designs are the hallmark of the Revolution system type. Creating engagement with color is very important to the largely powder-coated steel equipment. Here we've continued the complementary color scheme using both Sweet Plum and Fern Green on the steel, while creating visual interest with the variation of greens on plastic elements. Purposeful color application is important when mixing colors on one material type.



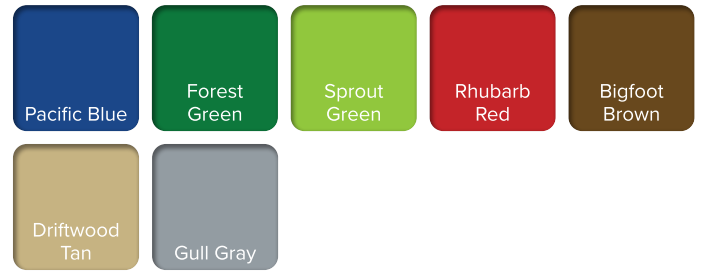
Color Palette
Balance

METALUXE™ Signature Powder-coat Colors

Our exclusive collection of metallic powder-coat colors provide a finish that speaks to luxury and brilliance. These highly durable, grime resistant coatings bring a touch of shimmer to your playscape.



PLAY-TUFF™ Coating Colors



Powder-coat Colors



Roto-molded Plastic Colors



Solid HDPE Colors

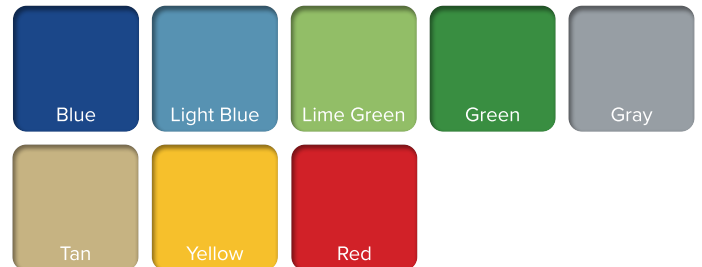
Layered HDPE Colors



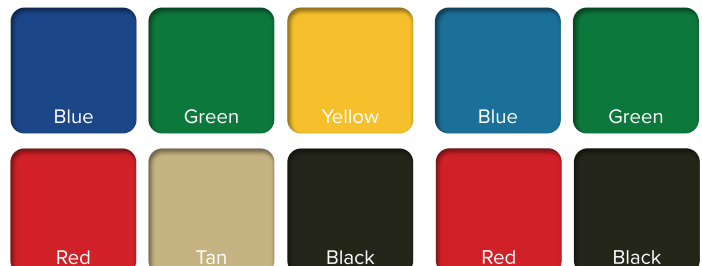
Thermoplastic Coating Colors



Shade Canopy Fabric Colors



Swing Seat Colors



PLAY-CORD™ Cable Colors

