

Elevate hygiene and help make faculty and students feel safe on campus



81%
of students are
concerned about
becoming ill due
to poor hygiene¹



Campus operations are complex

Campus hygiene has always been important, but it's now more critical than ever. In the wake of the pandemic, everyone from students and faculty to management have higher expectations. Securing hygiene is currently a major concern as students transition from remote to blended learning that combines on-campus and online classes. The result is that the role of the campus operations manager has become even more crucial and complex.

The Tork Campus Hygiene Guide helps you address the new hygiene challenges and make people feel safe on campus.

Content

The new challenges	Page 3
Hand hygiene Promoting and securing best practice	Page 4
Cleaning and surface hygiene Best practice for cleaners and the challenge of shared spaces	Page 5
Data-driven cleaning Improving hygiene with increased efficiency via digital tools	Page 7
Sustainability	Page 8
The Tork Campus Hygiene Package	Page 9
Hygiene consultation	Page 10

80%

agree or strongly agree with "I expect public restrooms to provide a safe hygienic environment to a higher extent now than before COVID-19"²

73%

of students prefer some courses be fully online post-pandemic³

48%

of parents rank campus cleanliness and indoor air quality in the top three most important factors when asked their opinion on college or university selection⁴

2. 2021 Survey conducted by United Minds in cooperation with CINT in March 2021. The survey covered the US, with a total of 1012 respondents. 3. Cengage's Digital Learning Pulse Survey, conducted by Bay View Analytics on behalf of the Online Learning Consortium, WICHE Cooperative for Educational Technologies, University Professional and Continuing Education Association (UPCEA) and Canadian Digital Learning Research Association, polled 1,469 students and 1,286 faculty and administrators across 856 United States institutions about how higher education is changing in the wake of COVID-19. 4. Survey conducted in partnership with Engine Insights in June 2021, the JLL Higher Education survey was based on a sample of 500 parents of 10th – 12th grade high school students considering higher education.

The new challenges

Blended learning that combines in-person and virtual classes is not a new concept, but since the pandemic it is quickly becoming the norm as more faculty and students have become used to it. The challenge for operations managers becomes how to maintain a high and consistent level of cleaning and hygiene when the number of students on campus varies widely and shared workspaces and study areas are now more of a concern.

The question is: how do you deliver on cleaning quality and hygiene in an ever-changing and more demanding environment – while at the same time taking care of all the traditional tasks, using the same or less resources and without compromising on operational efficiency?



COVID-19 has forced a shift in priorities when it comes to cleaning - from “clean and tidy” to “hygienic and safe”⁵

5. B2B International “Engaging with the Higher Education Market”, Qual Report, March 2021



Hand hygiene

First of all, make sure that you excel on the essentials. The most reliable way to prevent infection spreading via surfaces is to regularly wash hands with soap and water and dry hands with paper towels or use alcohol-based hand sanitizer⁶. In fact: it doesn't matter how much you clean if faculty, staff and students don't follow proper hand hygiene protocols. Promoting clean hands can also result in fewer sick days⁷. These are some of our tips to improve hand hygiene and limit cross-contamination.

Use touch-free hand towel systems

Nearly 7 in 10 users surveyed wish more facilities offered paper hand towels as an alternative to air dryers⁸. Make the safer choice and change to paper hand towels.

Close at hand

Use hand sanitizer/hygiene stands in campus facilities for optimal hand hygiene.

Time is valuable

Systems that dispense fast, prevent crowding and allow people to get in and out quickly, are used more than slow and time-consuming ones.

Ease of use

Choose hand hygiene systems that don't require a learning curve, but that are easy and intuitive to understand and offer visual cues.

Ensure availability

Choose high-capacity systems that ensure soap, sanitizers, and paper hand towels are readily available and minimize the risk of runouts.

Use reminders

Place visual reminders in washrooms or kitchen areas to remind faculty, staff and students to wash and sanitize their hands (see page 9 for free downloads).

Make life easier for cleaning staff

Choose high-capacity dispensers that are easy to clean and service and which serve more users between cleaning rounds. Using dispensers that can be refilled quickly as well as before they are empty, allows cleaners to spend less time servicing and reduce their exposure time to others in the facility.

6. www.cdc.gov/coronavirus/2019-ncov/community/disinfecting-building-facility.html, 7. <https://www.cdc.gov/handwashing/handwashing-school.html>, 8. 2021 Survey conducted by United Minds in cooperation with CINT in March 2021. The survey covered the US, with a total of 1012 respondents.

Cleaning and surface hygiene

The use of collaborative workspaces like meeting rooms, lecture halls, labs and libraries, along with so called “hot-desking” where students share furniture and equipment, increase the risk of germs being passed from person to person. In other words: It’s the sharing which is the main issue.

While it is of course the responsibility of cleaners and operations managers to keep surfaces clean with the right solutions, faculty and students should be encouraged to play an important role to promote hygiene and help keep shared spaces safe. Here are our tips on keeping surfaces clean and hygienic.



Cleaning vs. Disinfecting

Cleaning once a day is usually enough to remove dirt, bacteria and viruses that may be on surfaces (if no one with confirmed or suspected COVID-19 has been in the space), while disinfecting kills any remaining germs on surfaces, which further reduces any risk of spreading infection⁹.

High-traffic and high-touch areas need additional attention

You may want to either clean more frequently or choose to disinfect in addition to cleaning in shared spaces if the space:

- Is a high-traffic area, with a large number of people
- Is poorly ventilated
- Does not provide access to handwashing or hand sanitizer
- Is occupied by people at increased risk for severe illness from COVID-19⁹

When someone has COVID-19

It is recommended that if a sick person or someone who tested positive for COVID-19 has been in your facility within the last 24 hours, you should clean AND disinfect the space⁹. Make sure that your policy is clear on when faculty, staff and students should stay home due to illness or exposure to COVID-19.

Have a cleaning strategy in place

No two facilities are the same and developing and implementing a clear cleaning strategy helps your cleaning teams complete all tasks in a timely, thorough, and efficient manner. Examples of effective cleaning strategies are:

Proceed with cleaning...

- Higher up areas to low down
- Cleaner to dirtier
- Clockwise/counterclockwise

9. www.cdc.gov/coronavirus/2019-ncov/community/disinfecting-building-facility

Use disposable or microfiber cloths

Thanks to its fine fibers, the microfiber material picks up dirt and microorganisms, instead of just pushing them around. Change often for optimal hygiene. Microfiber cloths are often re-usable and also color-coded to help you minimize the risk of cross-contamination.

Keep a clean desk policy

We recommend a policy that encourages everyone to clean and sanitize their desks or workspaces before use and once finished. To enable this, make cleaning products like disinfectant wet wipes readily available. Also remind faculty and students to sanitize their computer screens, keyboards, mice and phones in compliance with the clean desk policy. Visit Tork Clean Care for a clean desk policy template (see page 9).

Establish your hygiene protocols

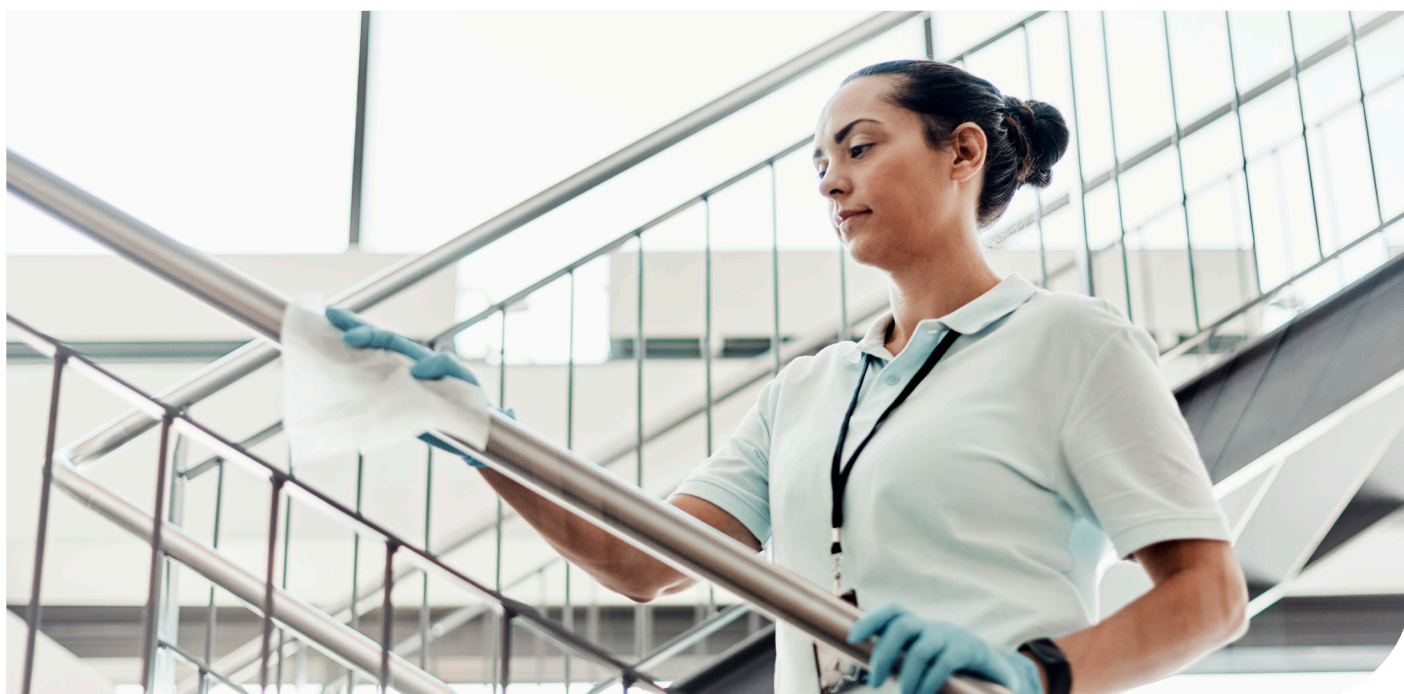
Use a small information folder to outline what you are doing together to make everyone feel safe. Or share your campus hygiene policy online. Supplement with hygiene reminder signs in high-traffic areas (see page 9).

Conduct a quick study

A simple swab test or traffic flow study can quickly help you identify areas that may need extra cleaning. Unexpected places, e.g. the shelves where people get their coffee cups, might need to be added to the extra task list for your cleaning teams.

Typical high-touch surfaces on campus

- Doorknobs, handles, light switches, elevator buttons and stair rails
- Tables, desks and countertops
- Phones, computer keyboards, touch screens and mice
- Printers and copy machines
- Coffee machines
- Toilets, faucets and sinks



Upgrade to data-driven cleaning

– stop guessing when it comes to hygiene

In the era of hybrid learning, there is no longer such a thing as a “typical day” for cleaning teams. Instead, the cleaning and hygiene needs vary greatly, depending on how many staff and students are using the campus facilities at any given point. This often leaves Facility Managers guessing about which areas need cleaning and when.

Tork Vision Cleaning is the world’s leading facility management solution for data-driven cleaning. It provides real-time data on traffic and cleaning needs to help operations managers:



Ensure high-quality cleaning and deliver on the new hygiene demands

- Make sure that dispensers are stocked up to 99% of the time¹⁰
- Use reporting tools to show adherence to safety regulations
- 100% of existing Tork Vision Cleaning customers say our system helps them improve hygiene in their facility¹¹



Optimize efficiency

- Know when and where service is needed
- Reduce dispenser checks by up to 91%¹²
- Save up to 20% of cleaning hours¹³
- Improve cleaning procedures using built-in insights



Meet sustainability targets and elevate well-being

- 85% of existing customers say our system helped them support a safer environment during COVID-19¹⁴
- Use real-time data to avoid early refilling and reduce waste
- 30% higher customer satisfaction¹⁵

Example of how data-driven cleaning works:

People counters and connected dispensers

Sensors measure visitor traffic and refill levels. A gateway collects the data and communicates with the cloud.

The cloud

Data from the gateway is collected in the cloud, which ensures security, reliability and scalability.

Tork Vision Cleaning

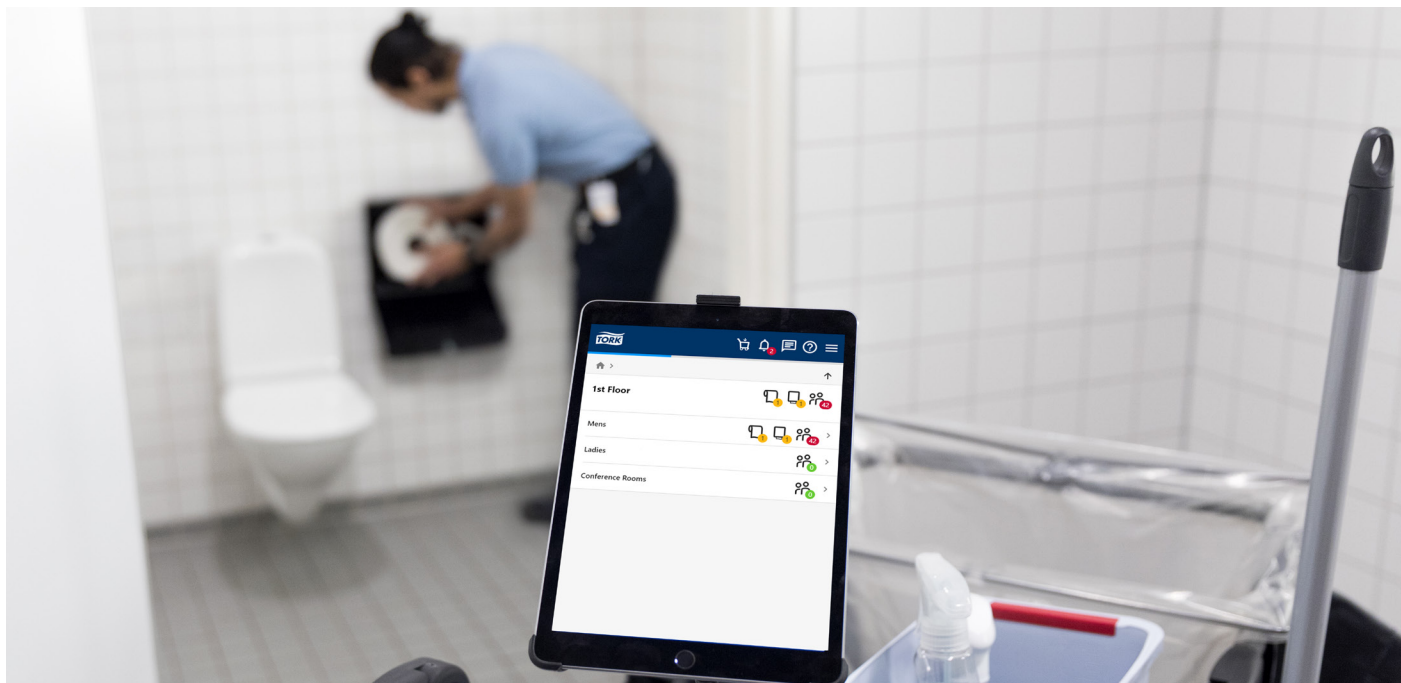
Real-time information is easily accessed on your desktop, tablet or mobile phone for quick, data-based decisions.



Learn more and book a demonstration:
torkusa.com/vision-cleaning



10. Measured across nearly 13,000 connected dispensers between June-December 2019, based on time per month that a dispenser is in an empty status against total time per month. 11. Based on survey results conducted in March 2021 of 34 Tork Vision Cleaning customers in Europe and North America. 12. Based on customer feedback for dispenser checks over 6 months before vs after installing Tork Vision Cleaning (between June-December 2019). Measured across 16 sites connected to Tork Vision Cleaning, with each dispenser check taking approx. 20 seconds. 13. Based on the documented results achieved by three Tork Vision Cleaning customers, measured before and after the implementation of Tork Vision Cleaning. 14. Based on survey results conducted in March 2021 of 34 Tork Vision Cleaning customers in Europe and North America. 15. Measurement of visitor satisfaction in two Tork Vision Cleaning washrooms and two traditionally maintained and equipped toilets at the ISSA/InterClean exhibition, May 2016. Note: Tork Vision Cleaning was formerly known as Tork EasyCube.



Don't choose between hygiene and sustainability

Campus operations managers are challenged to source solutions that are both effective and sustainable. This is where Tork can help.

Tork products and solutions help you:

- Reduce waste and carbon emissions
- Encourage resource-efficient usage
- Improve the work environment for faculty, staff and students
- Go circular with recycling programs to close the loop
- Meet your sustainability purchasing guidelines

Closed Loop Recycling

Closed Loop Recycling is a one-of-a-kind partnership for recycling of used, discarded paper into new paper hand towels, toilet tissue and napkin products. Together, we can enable your business to go circular and reach your zero waste to landfill goals, by turning waste into a resource. The program has helped University of Vermont:

- Divert over **15,000** cubic feet of office paper from traditional recycling, making new tissue products locally instead
- Avoid burning **75,000** gallons of oil in production and transportation
- Cut **12,000** pounds of air pollutants from production and transportation



Learn more:

torkusa.com/sustainability



Learn more:

torkusa.com/closedlooprecycling

The Tork Campus Hygiene Package

To help you make sure that you have the right hygiene product solutions in place, Tork has developed the Tork Campus Hygiene Package™. It offers a tailor-made selection of Tork products, services, tools and support that help you meet the new demands and create a healthy and hygienic learning environment to help faculty and students feel safe and welcome.



Products and services for every area of your campus

With the Tork Campus Hygiene Package you can be confident that you cover all your campus hygiene needs, including hand hygiene, wiping and cleaning products and services, in every part of your facilities: restrooms, lecture rooms and common areas, sports facilities and fitness centers, cafeterias and kitchens and the entire campus.



Learn more:

torkusa.com/campushygiene



Learn more:

torkusa.com/cleancare



Restrooms



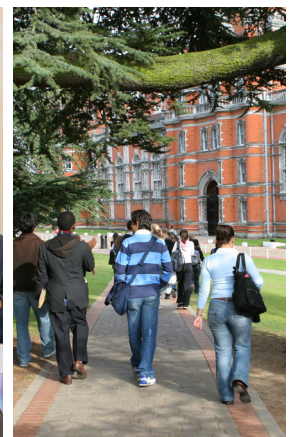
Lecture rooms and common areas



Sport facilities and fitness centers



Cafeterias and kitchens



Entire campus

Book a hygiene site survey

To make sure your campus meets the new hygiene demands, book a hygiene site survey where we:

- Review your current campus hygiene practices
- Identify opportunities to improve operational efficiency and hygiene
- Introduce solutions to help meet your needs and achieve a sustainable campus

The survey can take place at your campus or virtually. Visit the website below to book your hygiene site survey.



Learn more:



torkusa.com/campushygiene
tork.ca/campushygiene

Get in contact:



torkusa@essity.com



866-722-8675