



## REQUEST FOR CONTRACT UPDATE # 158060

Pursuant to the terms of your awarded contract, all Contractors must notify and receive approval from Region 14 Education Service Center (“**Region 14 ESC**”) when there is an update to the contract. No request will be officially approved without the prior written authorization from Region 14 ESC. Region 14 ESC reserves the right to accept or reject any request.

\_\_\_\_\_ Transact Campus Inc. \_\_\_\_\_ (Contractor Name) hereby provides notice of the following update to Region 14 ESC contract number 158060 for \_\_\_\_\_ Campus ID Credential Transaction and Digital Payment Solutions \_\_\_\_\_ (Contract Title) on this date 2/4/2026.

### Instructions:

**Vendors must check all that may apply and provide supporting documentation.** Be sure to sign the signature page with all required signatures, prior to submitting your update for approval.

#### Authorized Affiliates/Dealers/Distributors/Resellers

- Additions
- Deletions

#### Products/Services (check all that apply)

- Additions
- Deletions
- Modifications
- Pricing Update

#### Material Change

- Assignment
- Change in Ownership (Sale/Purchase)
- Bankruptcy
- Acquisitions
- Merger
- Supporting Documentation

**Other** Vendor may include other notes regarding the contract update here: (attach another page if necessary).

Please see supporting attachments for more details regarding the following needed updates per this amendment request:

1. Add 4 new product lines to the agreement, which are heritage-CBORD products (includes two additional Mobile ID/Security products and the addition of 2 Foodservice Management Products). *Product descriptions attached.*
2. Update to the discount structure as outlined in the original agreement to ensure price parity with other like GPO/consortium agreements for the higher education market. *Redlined pricing exhibit attached.*

Transact Campus Inc.

Vendor Name

Stephen Chambers

Submitted By

<small>DocuSigned by:</small>  <small>F0EF7554D8224A0...</small>	3/5/2026
Signature	Date

**FOR USE BY Region 14 ESC ONLY:**

Emily Jeffrey, Chief Financial Officer

<small>Signed by:</small>  <small>4FE6AE70707547B...</small>	3/24/2026
Signature	Date

**For material changes**, the awarded contract holder and/or subsequent assignee agrees to and understands the following principles:

1. **Contract holder reference.** If the contract holder has undergone a merger, acquisition, or partial assignment, where they still maintain the contract, then all transactions made under the existing contract number (including purchase orders) must reference the name of the awarded contract holder. The exception to this requirement is if the contract holder no longer holds the contract or if the company has been acquired by another company and undergone a name change. Notice of the authorized name change, to the existing contract, must be provided and approved by Region 14.

In instances where the contract holder has acquired a separate and distinct company, and it is necessary to designate those certain purchases facilitated by the non-contract holder, then this designation may be made if, and only if, the contract holder is also referenced on the transaction.

2. **Maintenance of Records.** Both the awarded contract holder and subsequent assignee agree to remain responsible for maintaining all auditable records, including documents kept in the ordinary course of business and sales invoices, related to OMNIA Partners, Public Sector, NCPA, and/or contract number pursuant to the statutory requirements identified in the vendor contract.
3. **Payments.** Both the awarded contract holder and subsequent assignee agree that all payments made by participating entities must be made directly to the contract holder, unless otherwise approved by Region 14. Accordingly, both parties acknowledge that in

instances where it is necessary to designate the purchases facilitated by assignee, that the contract holder must also be referenced on the purchase order.

4. **Handling of Proprietary and/or Confidential Information.** In accord with the terms of the contract, both awarded vendor and assignee agree that at all times it will hold in strict confidence and not disclose to any third party confidential and/or proprietary information of Region 14, except as approved in writing by Region 14, and will use the confidential information for no purpose other than providing services under the contract. Both awarded vendor and assignee shall only permit access to confidential information to those of its employees or authorized representatives having a need to know and who have signed confidentiality agreements or are otherwise bound by confidentiality obligations at least as restrictive as those contained herein.

This document is to be construed in strict accordance with the terms and conditions outlined in the Region 14/vendor Master Agreement referenced herein. Both awarded vendor and assignee agree to uphold the vendor obligations set forth in the vendor agreement. This agreement will become effective when signed by all parties.



## CBORD CS Access

### **Integrated Security Solution**



**Manage access points**  
throughout campus.



**View comprehensive mapping**  
of alarms and locations.



**Automatically assign  
privileges** to students.



## KEEPING CAMPUSES SAFE

Colleges and universities face complex access control concerns. From doors to parking gates, turnstiles to elevators, residence halls to academic buildings, your campus has numerous entry and exit points that require secure oversight and control to ensure everyone's safety. CS Access is CBORD's comprehensive access control solution built specifically for higher education campuses.

### SECURITY WITH CONVENIENCE

CS Access supports immediate, automatic information exchange and provides complete control from a single platform. A native add-on module of CS Gold, CS Access is fully integrated with the campus card system and leverages its features. For Odyssey and ResCenter users, CS Access Link is a powerful utility that keeps critical data updated between systems. While each solution maintains its own database, the information is integrated, so CS Access updates automatically as patron data changes.

### Administration and Assignments

Leveraging your campus card system's existing tools and integrated student information, access assignments for housing, recreation, and classrooms are completely automated through CS Access. System administrators can create access schemes using schedules, holidays, and groups. If something needs to be changed quickly, remote lock, unlock, open, and lockdown are easily accessible. Distributed administration provides precise controls that only allow users to see or update specific locations. Calendars, schedules, and patron groups are shared, so each user group can build on what already exists, and information is consistent throughout the system.

### Mobile Credentials and Biometrics

With frictionless mobile technology leading the way, campus identity systems are replacing traditional campus card systems. Instantly and remotely issue, revoke, and reactivate credentials through your campus card office with mobile credentials. CBORD's mobile credential support for campus ID cards offers a more convenient and

secure way for students to access the services they use every day.

Through CS Access, register biometric credentials quickly, and positively identify users while they are still in motion at an access point. Our CBORD solutions fully support the shift to these new technologies that increase student safety and satisfaction, reduce plastic, and optimize movement through campus.

### Zone Emergency Lockdown

Our emergency module provides a map of your entire campus to allow security to quickly enable lockdowns for specific buildings, zones, or the whole campus. A mobile option even supports this functionality using a smartphone.

### Reporting

Standard reports and the alarm logs associated with CS Access provide the ability to sort alarm events based on user-definable criteria, including all alarms viewed through alarm mapping. CS Access also features COVID-19 contact tracing reports to facilitate accurate tracking of positive cases throughout campus.

### Intelligent Hardware

CBORD partners with industry-leading hardware providers like Allegion, ASSA ABLOY, HID Global, Mercury Security, and IDEMIA to enforce access privileges across campus. Choose from a range of hardware systems to meet the needs of any access point environment on your campus. The intelligent control panels interface with CS Access in real time for reliable privilege enforcement and security.

---

## WHY CBORD?

Only one company has helped colleges and universities create connected campuses for more than 45 years. CBORD offers centralized solutions to improve the student experience, increase revenue, and inform strategic planning. Learn more by emailing [highered@cbord.com](mailto:highered@cbord.com).



844.GO.CBORD • [cbord.com](http://cbord.com)





## CS Gold 9 Release Overview

# Empowering Campuses with AI, Modernization, and Enhanced Control

The **CS Gold 9** release introduces groundbreaking improvements across the platform, delivering powerful new tools and capabilities to enhance campus operations, modernize user experience, and streamline administrative tasks. From AI-driven data access to modernized GUIs (Graphical User Interface) and enhanced integration support, Gold 9 is designed to simplify the complex—so institutions can focus on delivering an exceptional campus experience.



## Key Benefits



### AI Chat Feature

Query your CS Gold database using natural language—no SQL knowledge or report writing required. Save prompts, reuse them, and get answers fast.



### Modernized User Interfaces

Updated GUIs provide a cleaner, more responsive experience—optimized for both desktop and mobile devices.



### Top-10 Aha! Feature Requests Delivered

Your most-requested updates are here—from enhanced reporting tools to easier patron management.



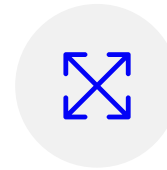
### New GUI Wizards

Simplify complex configurations with step-by-step wizards for locations and meal plans.



### Enhanced Data Extraction Tools

Flexible export formats, repeatable processes, and expanded delivery options for patron data.



### Expanded Platform Support

Fully compatible with Windows 2025, plus improved Microsoft Cluster and Oracle RAC support.

## HIGHLIGHTED FEATURES

### AI Chat

- Query your database using everyday language
- Retrieve insights instantly—no need to know SQL or the schema
- Reuse and rerun saved prompts

### GUI Enhancements

- **Patron Lookup:** Modern, responsive design with mobile optimization
- **Access Assignment:** Auto-remove unused access, set max use limits
- **TPS Dashboard:** Group MPPs & MGRs, control services like Mobile Credentials and Memcached directly from the dashboard
- **Push Notifications to GET:** Use transaction data to send targeted messages via new Web Patron Notifications GUI

### Top Aha! Enhancements

- **Patron Lookup:** Delete patrons from the web, view recent changes affecting patron experience
- **Reports:** View and edit SQL, manage report access via one interface
- **Priv Editor:** WYSIWYG-style menu editor for GUI access control

### New Configuration Wizards

- **Location Wizard:** Add and configure new locations using a step-by-step, template-driven process
- **Meal Plan Wizard:** Easily create and manage plans using pre-defined templates and simplified options

### Data Export Tools

- **Patron Export Tool:** Export data in customizable formats (CSV, fixed length, etc.), save and rerun export definitions, choose delivery method
- **Patron Group Export:** Export selected patron group members to CSV

### Expanded Interfaces

- **Transact ACI Integration:** Real-time API sends TSE/IDX patron, credential, and access plan data to CS Access
- **Grace Period and Open MyDoor:** Unlock full CS Access capabilities including MasterKey, Room Reservation, Access Wizard, and more.
- Unlock full CS Access capabilities including MasterKey, Room Reservation, Access Wizard, and more



## UPGRADE CONFIDENTLY

With Gold 9, campuses can move faster, work smarter, and serve better. Whether you're modernizing interfaces or unlocking the power of AI, this release is your gateway to a more efficient and responsive campus system.

## Why CBORD?

Since its inception, CBORD has been at the forefront of emerging technologies. Only one company has supported campus merchants worldwide for more than 45 years. CBORD offers centralized solutions to improve the customer experience, increase revenue, and inform strategic planning. Learn more by emailing [higher@cbord.com](mailto:higher@cbord.com).



844.GO.CBORD • [cbord.com](http://cbord.com)





## NetNutrition

**Provide Instant and Accurate  
Nutritional Information**



**Improve student, faculty, and staff safety and satisfaction** with online nutritional information.



**Stay current with menu changes** through seamless integration with CBORD's NetMenu.



**Reduce time and eliminate risks** associated with performing manual tasks, such as posting nutritional information or printing reports.

Today, students, parents, faculty, staff, and other campus guests expect easy access to nutritional and allergen-related information on the foods served in your dining venues. CBORD now makes it easier than ever to attract, educate, and connect with your diners on campus with NetNutrition.

NetNutrition is an online solution that lets students, staff, and other patrons view menu offerings; filter by dining location, allergens, or other preferences (vegan, kosher, locally grown, etc.); and see nutritional information not only for specific menu items, but also for entire meals or days. Fully integrated with NetMenu, NetNutrition is powered by your menu data, eliminating the need to update each system individually. NetNutrition is updated automatically, providing your campus diners with the latest information to help them make informed decisions.



## INFORMED MENU CHOICES

NetNutrition is designed with today's dining environment in mind, offering benefits for a variety of stakeholders. Students learn healthy eating habits, parents find peace of mind knowing their children are eating well and safely, and administrators take pride in promoting their university's commitment to the well-being of its students and staff.

## FLEXIBLE, EASY-TO-USE FEATURES

### Mobile Support:

Now students can take the power of NetNutrition wherever they go. The site is optimized for display on mobile devices, empowering students and other diners to make informed choices on the go from the convenience of their smartphones.

### User-Friendly Navigation:

NetNutrition features an intuitive user experience that is easy for customers to navigate with little or no training. Nutrition labels are displayed simply by hovering the mouse over an item. Allergens and items meeting certain criteria (vegetarian, kosher, sustainable, etc.) are identified with attractive icons. The site makes it easy for customers to quickly determine the nutrition of a single item, a meal, or an entire day's worth of dining in a familiar online format.

### Improved Customization:

The latest release of NetNutrition enables universities to take the site's design into their own hands. While CBORD offers design services for those universities desiring assistance, universities can now take complete control of the site's design with flexible customization.

---

## WHY CBORD?

NetNutrition fully integrates with NetMenu, our comprehensive foodservice management solution designed to meet the ever-evolving needs of a college or university campus. Combined with our industry-leading support, project management, database services, and training, NetMenu gives our customers the confidence to meet goals and develop successful dining programs.

Only one company has helped colleges and universities create connected campuses for more than 45 years. CBORD offers centralized solutions to improve the student experience, increase revenue, and inform strategic planning. Learn more by emailing [highered@cbord.com](mailto:highered@cbord.com).



844.GO.CBORD • [cbord.com](http://cbord.com)





## CBORD NetMenu

# Cloud-Based Foodservice Management



**Improve customer satisfaction** and safety with accurate nutrition and allergen information.



**Maximize your margin** by reducing costs, eliminating waste, and optimizing menu design.



**Enjoy the benefits** of an enterprise solution for centralized foodservice management.

## WHAT'S FOR LUNCH?

Campus dining is integral to a student's living and learning experience. Expectations for collegiate dining programs are shifting drastically as students become accustomed to restaurant-style offerings and emerging food trends. As one of the most expensive campus operations to organize and run, dining programs are being pushed to streamline procedures to cut costs while simultaneously offering appealing menus to attract customers.

## FOOD MANAGEMENT IN THE CLOUD

CBORD's NetMenu is a cloud-based foodservice management system designed to meet the ever-evolving needs of a college or university campus. Gain quick access to the critical data you need to run your operation and tools to help you reduce costs, improve production efficiency, and increase revenue. The solution is easy to use and includes purchasing controls, menu planning, food production and forecasting, sales usage and waste tracking, inventory management, cost analysis, and optional integrated nutritional analysis and allergen tracking.

With a cloud-based solution, you're always running the latest version of the software. Upgrades are included in the cost of the system and happen behind the scenes, so you don't have to schedule downtime. There are no on-site servers to maintain or hardware to update. NetMenu also comes with unlimited logins from a web browser, so individual user licenses are not required. CBORD offers a variety of remote training options to make sure your staff is utilizing the system to its fullest.

## MENU MANAGEMENT

NetMenu ensures consistency across the entire organization by allowing each location to access standardized item information to create local recipes. You can quickly make operational adjustments across venues to ensure menu items are available and fresh for mealtimes.

NetMenu can help you optimize your menu design to provide consistency and flexibility with unit-specific menus. You can plan meals at the station level and use smart tools for forecasting and analysis. NetMenu improves production process efficiency with multiunit production and easily scales recipes and generates prep and pull lists to maximize use of stock.

## INVENTORY CONTROL

NetMenu supports physical and perpetual inventory models. Inventory can be entered on a tally sheet or scanned electronically with a handheld device using our optional Mobile Inventory app, which runs on iOS and Android devices.

Mobile Inventory provides flexibility, allowing you to enter counts anywhere you have inventory — even freezers without internet connectivity. The app also makes it easy to issue and transfer product to and from revenue centers.

## ORDERING AND RECEIVING

Take the buying decisions out of local hands. With NetMenu, shared data, central control, and local configuration work together to ensure the right product at the right price. Electronic vendor integration — and integration into your accounts payable, general ledger, and point-of-sale software — will allow you to better manage ingredients, products, vendor items, and the links between them. NetMenu's electronic receiving feature updates product inventory and pricing, and the accounts payable integration completes the process.

## CENTRAL DISTRIBUTION

NetMenu's newest module improves communication, production, and labor consolidation between multiple sites and a central production facility. It communicates between management systems, streamlining workflows and improving overall production efficiency. Central distribution provides a transparent landscape and detailed reporting to unify retail, delivery, and catering services between multiple revenue centers. The module can even handle internal transfers of stock between sites, helping you offset labor challenges and allocate your resources properly.

Central distribution allows any operation to treat its warehouse or central production kitchen as a vendor and shows immediate inventory activity that can impact menu cost analysis. This tool allows the CPU (central production unit) to have both detailed and summarized daily reports regarding cooking methods, product quantity, and any needed distribution equipment that allows the delivery drivers and receiving units to easily identify correct products.

## REPORTING AND ANALYTICS

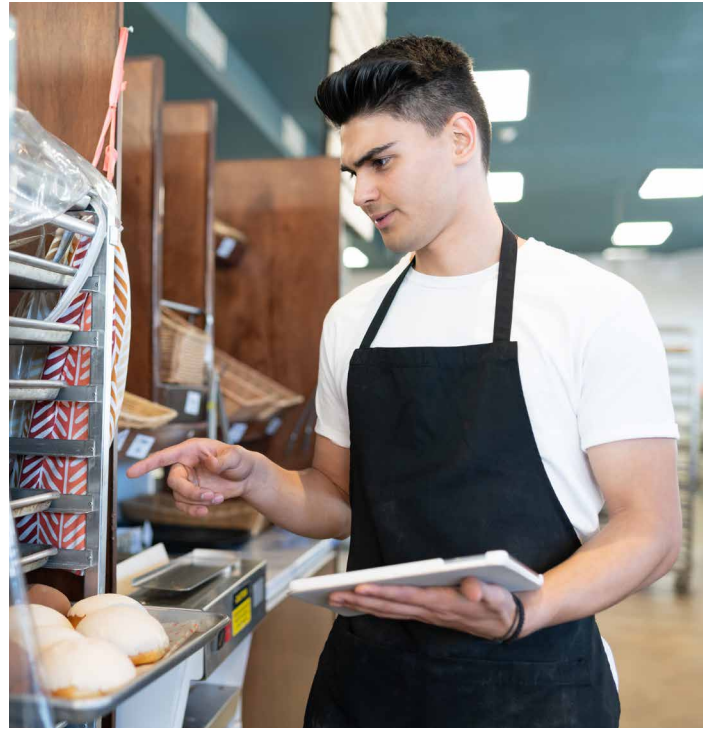
Reports make it easy for each operation to know its costs and easily identify opportunities for savings. In-depth inventory analysis gives visibility into the movement of product and theoretical versus actual cost. NetMenu separates costs for service units with shared production and inventory. Calculate cost of goods sold to evaluate the cost to produce items, including indirect costs such as condiments and prep time. Summary and detailed reporting and standard portion analysis provide the tools you need to analyze your recipes and menus.

Data Analytics is an additional CBORD solution that gathers and warehouses your CBORD data and provides intuitive analytics tools and dashboards. CBORD also offers expert coaching services for guidance in customizing your analytics dashboards for your food and nutrition management systems.

## NUTRITIONAL AND ALLERGEN INFORMATION

Ensure student safety with accurate analysis of nutrition and allergen information. With NetMenu, allergens can flow from manufacturer information to ingredients and recipes through our vendor integration.

Adding NetNutrition, our easy-to-use nutrition portal, ensures your customers have access to menu, nutrition, and allergen information when and where they want it. NetNutrition is powered by your menu data, eliminating the need to update each system individually, and is updated automatically.



## WHY CBORD?

NetMenu is the comprehensive solution your campus needs. In combination with our industry-leading support, project management, database services, and training, NetMenu gives customers the confidence to meet goals and develop successful dining programs.

Only one company has helped colleges and universities create connected campuses for more than 45 years. CBORD offers centralized solutions to improve the student experience, increase revenue, and inform strategic planning. Learn more by emailing [highered@cbord.com](mailto:highered@cbord.com).



## ADDITIONAL SOLUTIONS TO ENHANCE YOUR OPERATION:

- AP/GL integration
- BarTender
- C-Store
- Central Distribution
- Data Analytics
- Menu board integration
- Mobile Inventory
- NetNutrition
- POS integration
- Vendor integration



844.GO.CBORD • [cbord.com](http://cbord.com)

